

Elk E27 - Lock

Crestron Home™ Driver

Base Model: E27 Z-Wave Lock

Device Type: Lock

Version: 1.0.1

Notes & Recommendations

This driver provides seamless integration for **Z-Wave Door Locks** when connected through an **ELK-E27 Alarm Engine**. Communication between the Crestron Home processor and the Elk panel is handled over **TCP/IP**, allowing for robust, bi-directional control of your door hardware without additional Z-Wave gateways. Supports one Z-Wave lock per driver instance.

Native Control: Supports native Crestron Home lock features, including Lock, Unlock, battery information, Quick Actions, and Events.

The Elk panel is limited to 8 locks.

This driver includes a **2-hour trial license** to allow for on-site testing and verification. To ensure uninterrupted operation, you can purchase a full license at <https://digitalautomation.us/product/e27-z-wave-door-lock-driver>

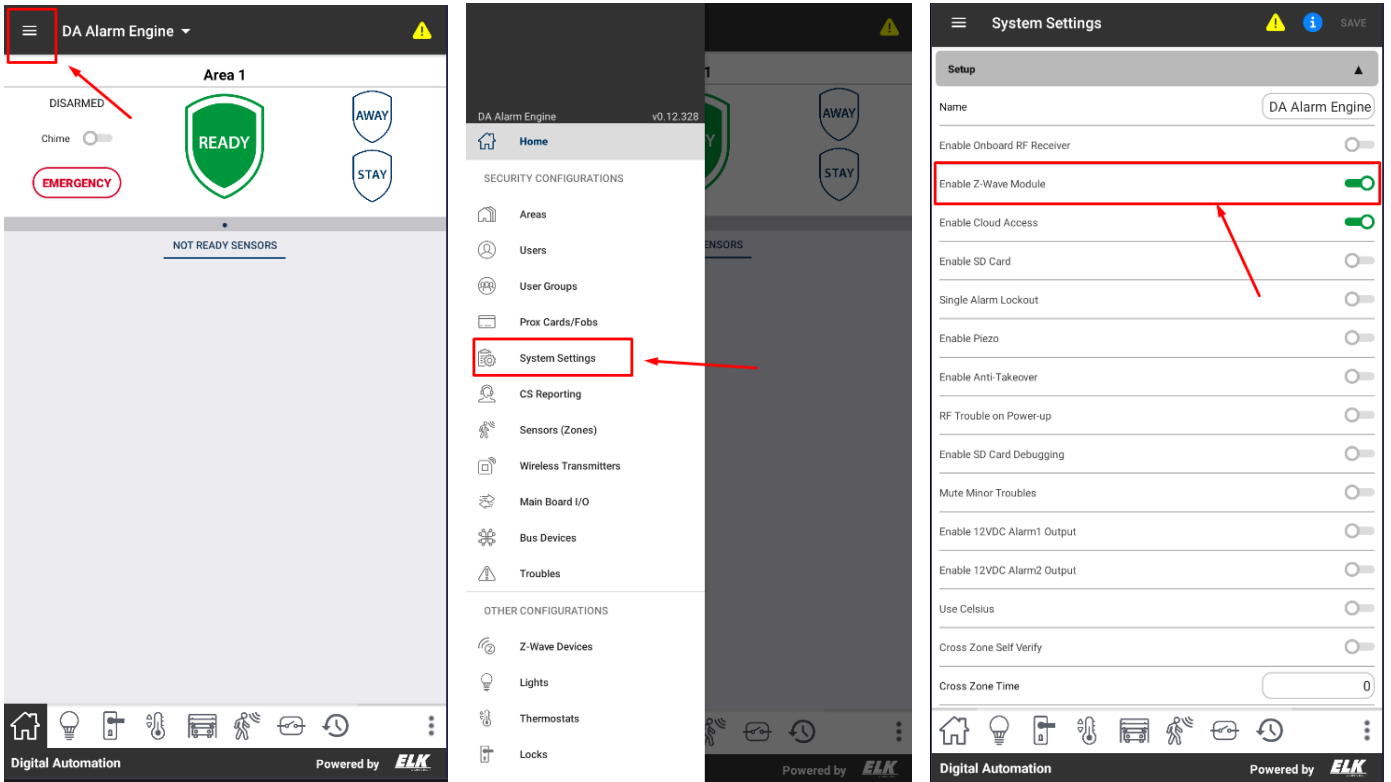
Installation/Upgrade Instructions

Please ensure your ELK-E27 Alarm Engine and all associated Z-Wave locks are fully configured and functional within the Elk system before installing this driver. For instructions on pairing your hardware, please refer to your specific door lock manual for details on how to enroll the device into the Elk panel.

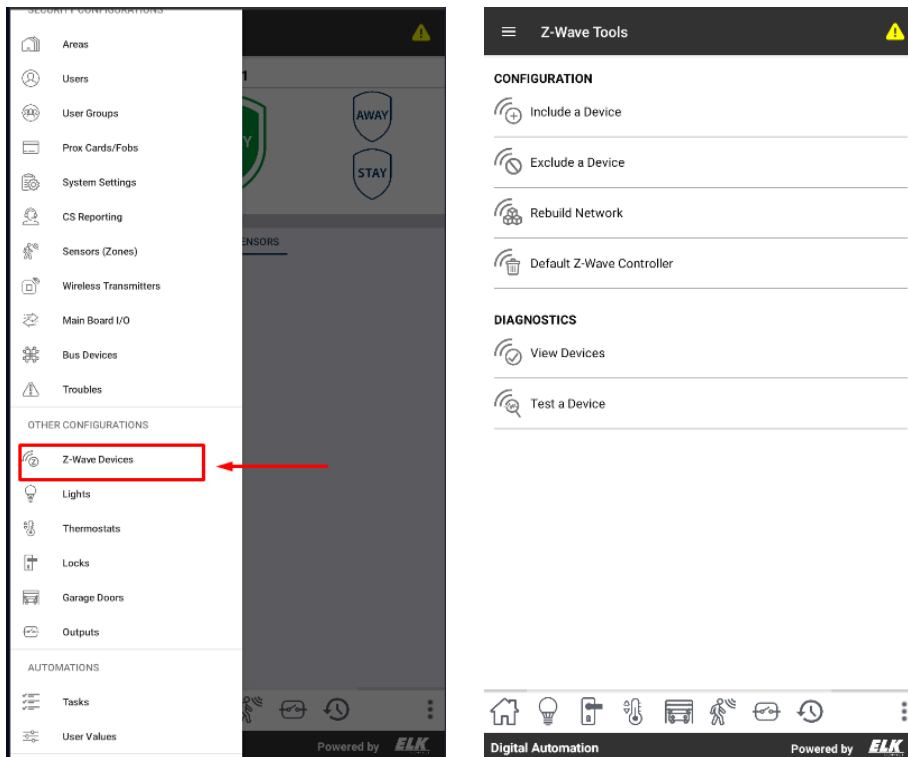
Note: As with any driver, it is strongly recommended that a configuration or a golden configuration be saved in Crestron Home™ before adding any driver.

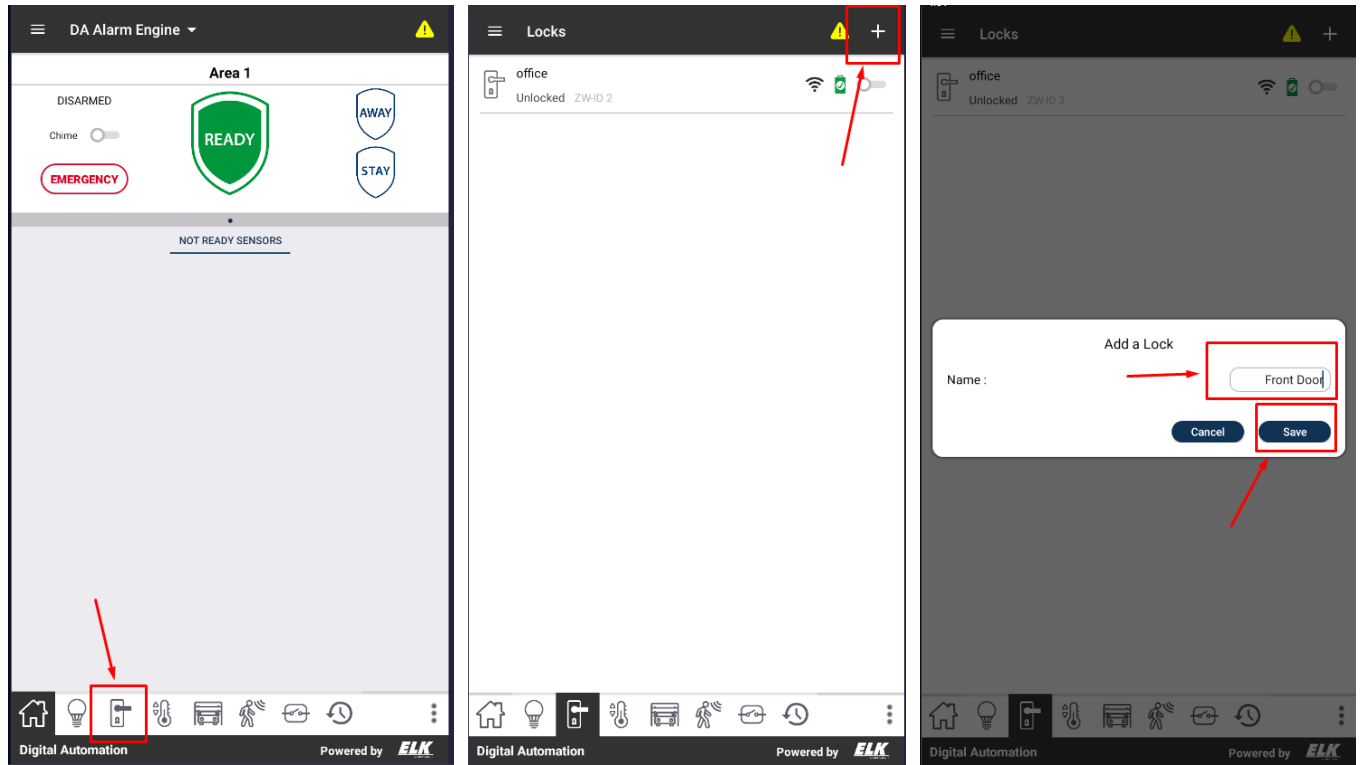
For additional information for this driver, please visit the FAQs section on our website <https://digitalautomation.us/product/e27-z-wave-door-lock-driver>

You need install and enable the Z-Wave module in the Elk Connect app:



Add the Z-Wave lock





Install the driver

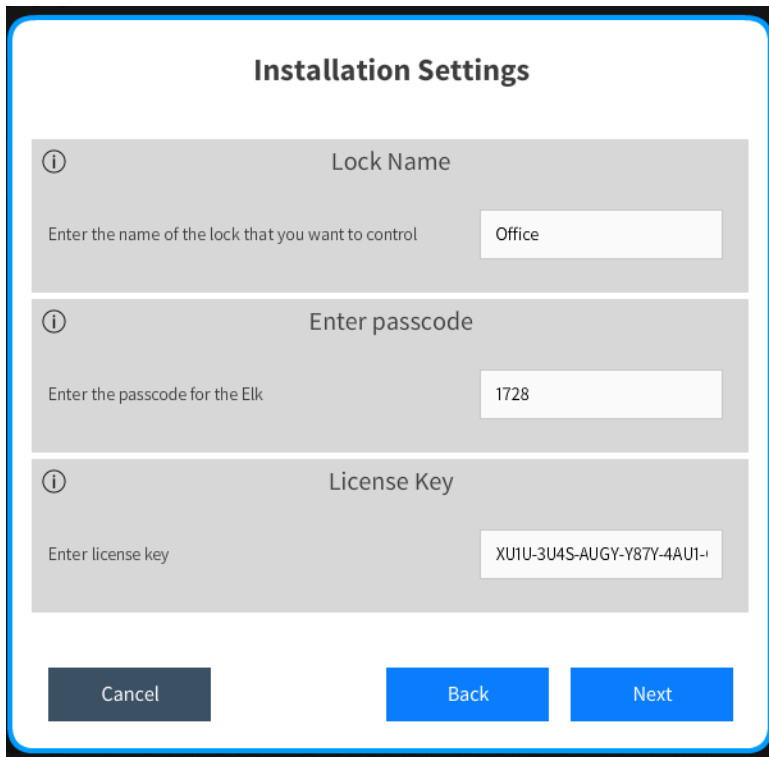
When adding the driver to a room, it will ask for a descriptive name, IP address, and port for the Elk panel.

This driver comes with a 2-hour trial license, and the license key can be updated either during the initial deployment or later on from the installer settings tab.

For additional information about this driver, please visit the FAQs section on our website <https://digitalautomation.us/product/e27-z-wave-door-lock-driver>

Enter the lock name in the installer settings to select which lock will be controlled by the driver.

The passcode is needed to control the devices through the Elk E27 panel.



Installation Settings

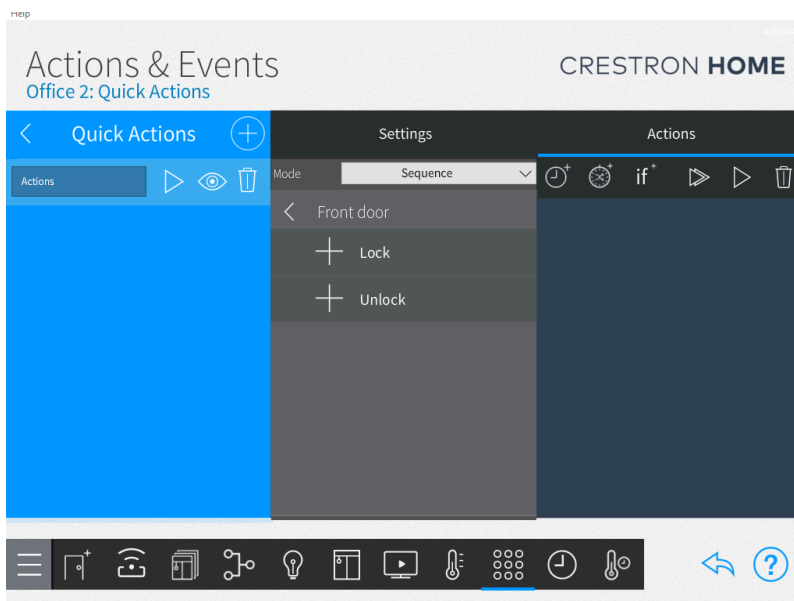
Lock Name
Enter the name of the lock that you want to control

Enter passcode
Enter the passcode for the Elk

License Key
Enter license key

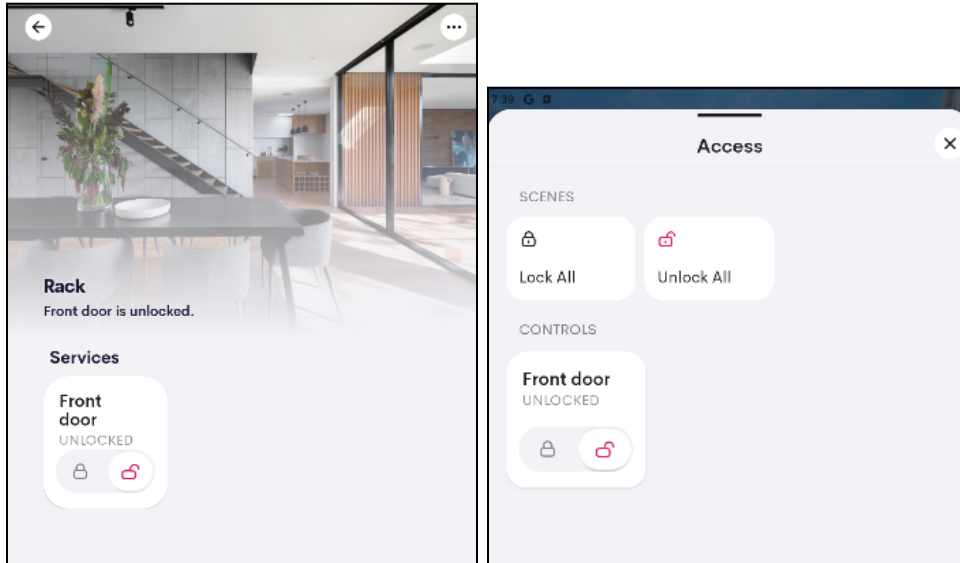
Cancel Back Next

After entering the required information and clicking the **"Next"** button, please allow approximately **20 seconds** for the driver to become available. This intentional delay ensures the driver initializes correctly following a processor reboot. The driver will be fully operational once this brief startup sequence is complete.



End-User Experience

The lock can be accessed from the room or via the Control Access section in the Home.



Supported Features

- Lock
- Unlock
- Quick actions
- Battery status

Minimum System Requirements and Dependencies

- Crestron Home 4.007.243.
- CDD SDK 25.0.33
- Elk E27 Alarm Engine with separate Z-Wave module

Test Environment

- Crestron Home 4.007.243.
- CP4R Firmware v2.8000.00057 (Sep 17 2025).
- Android 4.8.10+pr

Supported Models

- E27 Z-Wave Lock Single
-

Contact Information

If you have any questions, please contact us at drivers@digitalautomation.us

Version History

1.0.0

02/11/2026

- Initial release

1.0.1

04/20/2026

- Model name updated
-

Licensing and Copyright Information

All product names, logos, brands, trademarks, and registered trademarks are the property of their respective owners. All company, product, and service names used in this manual are for identification purposes only. Use of these names, trademarks, and brands does not imply endorsement.

Certain Crestron products contain open-source software. For specific information, please visit www.crestron.com/opensource