



## Elk

### Crestron Home™ Driver

**Base Model:** E27

**Device Type:** Security

**Version:** 1.0.2

---

## Notes & Recommendations

This Elk E27 driver manages communication to the ELK security panel via TCP/IP (requires an ELK-E27 to be installed and properly configured). You will be able to control your Elk security system including, arm stay, arm away, and disarm. You will also get arming status, and the ability to bypass faulted zones. In addition to all the basic features, there is support for a Faulted Zone list with the ability to bypass individual zones.

This driver uses the native Crestron Security features. Please make sure that your Elk security panel is set up and configured properly before using this driver.

We recommend creating a room that will be hidden (in this help file, the room is called out as Rack) to add this Elk driver into the Crestron Home™ user interface. This driver comes with a 2-hour trial license. You can purchase a full license at

<https://digitalautomation.us/product/elk-e27-security-for-crestron-home/>

**Note:** As with any driver, it is strongly recommended that a configuration or a golden configuration be saved in Crestron Home™ before adding any driver.

---

## Installation/Upgrade Instructions

The Elk security system should be fully configured and functional before adding the driver. The IP address and port are needed to establish the communication.

## Hardware setup

In the Elk E27 app, configure the zones using these settings as a base configuration:

←

Sensor Details

SAVE

ID:

3

Assignment:

Main Board - Input 3

Type:

N/O - Normally Open

SENSOR CONFIGURATION

Name

Interior

Area

Area 1

Definition

BURG INTERIOR

Bypassable

☒

Chime

☒

Cross Zone

☐

Delay Reporting

☐

Disabled

☐

Force Arm

☐

Ignore Tamper

☐

Interior Follow

☐

Report Alarms

☒

Report Bypasses

☐

Report Restorals

☐

Report Troubles

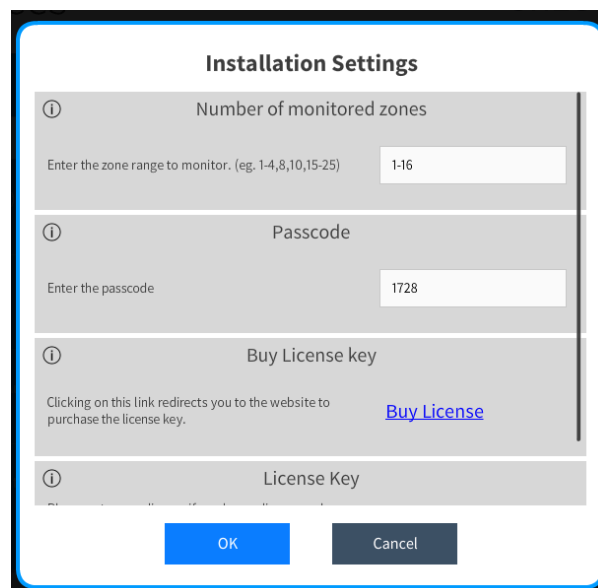
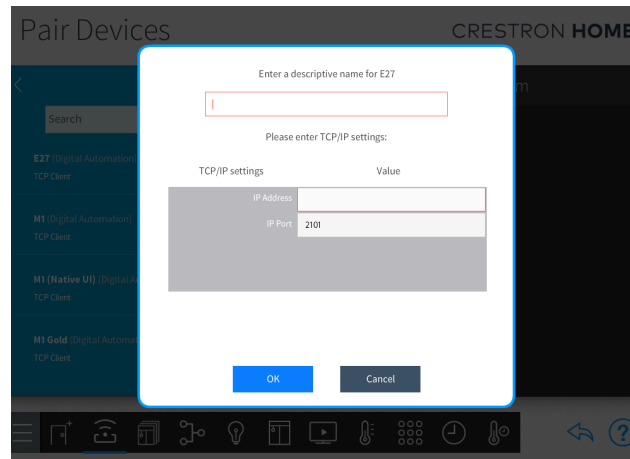
☒

Silent

☐

## Install the driver

When adding the driver to a room, it will ask for a descriptive name, IP address, and port for the Elk panel.

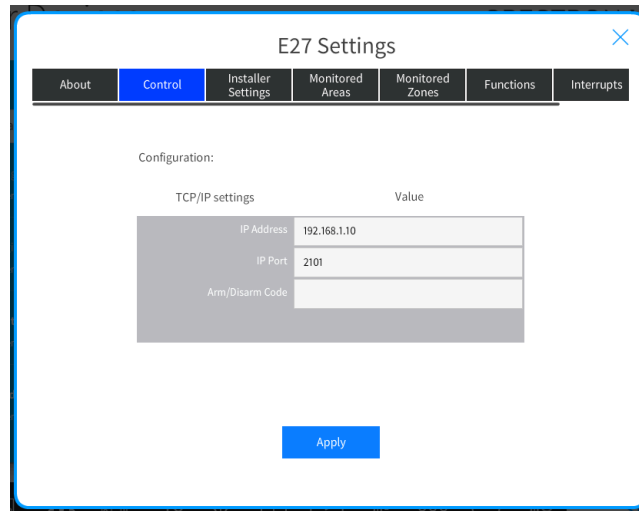


This driver comes with a 2-hour trial license, and the license key can be updated either during the initial deployment or later on from the installer settings tab.

For additional information about this driver please visit the FAQs section on our website <https://digitalautomation.us/product/elk-e27-security-for-crestron-home/>

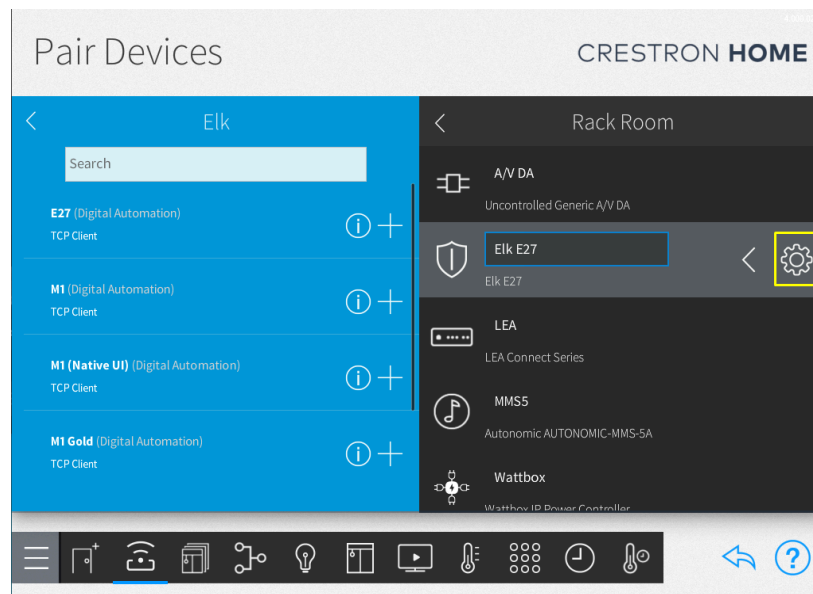
### Note:

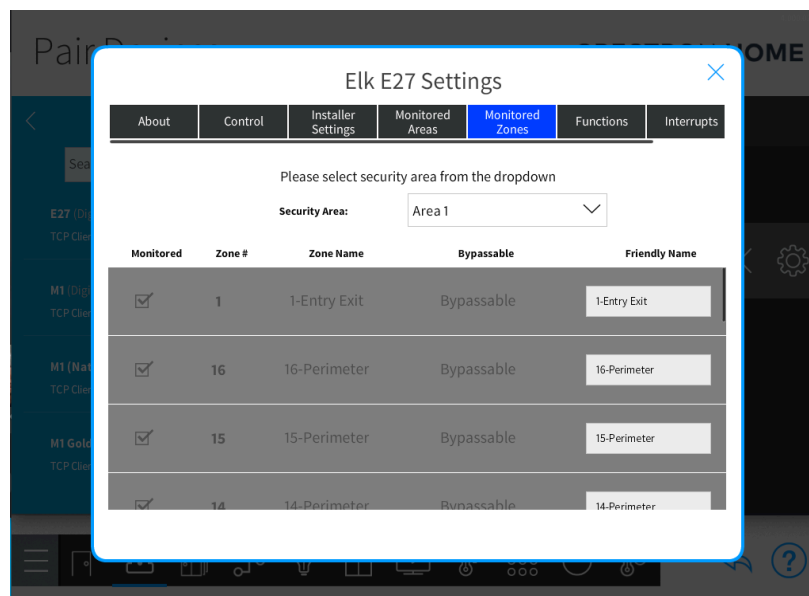
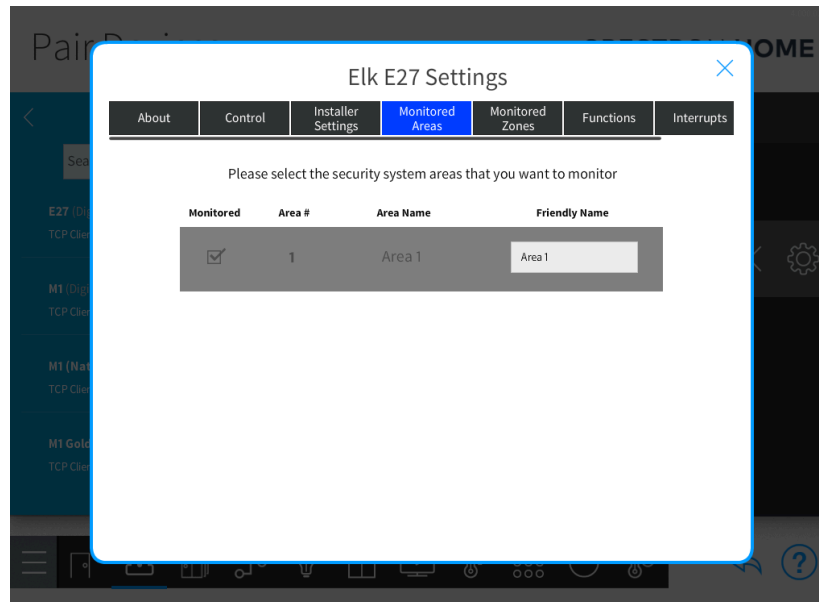
When using the driver settings, the “**Arm/Disarm Code**” field in the **Control** tab is unused, it should be blank, see the image below.

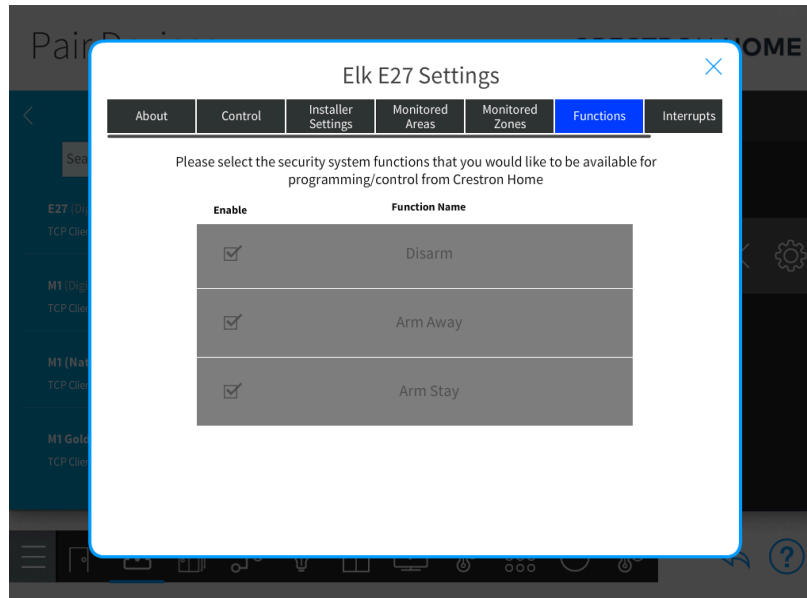


## Security system features

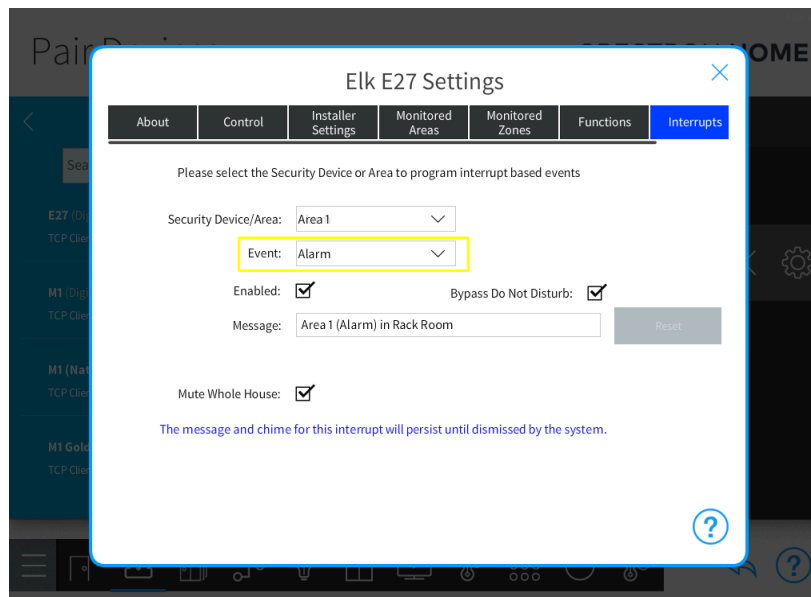
You can set up the features from the driver settings

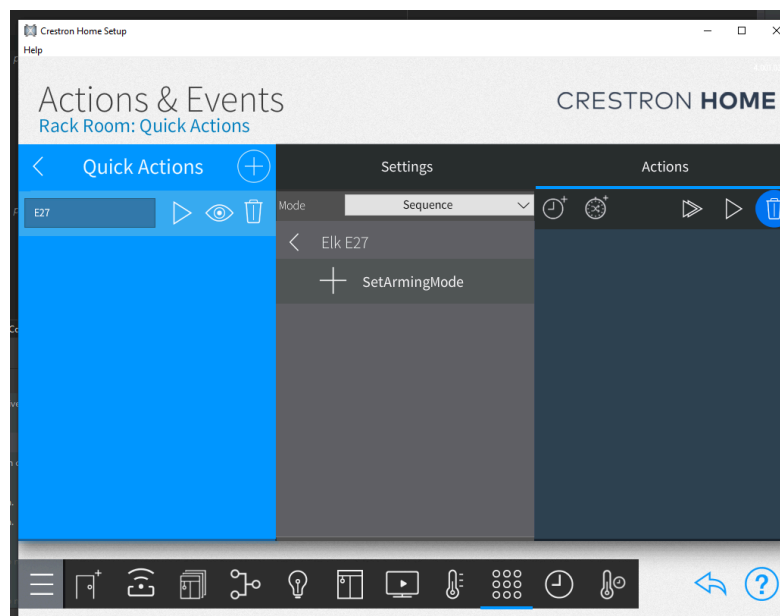
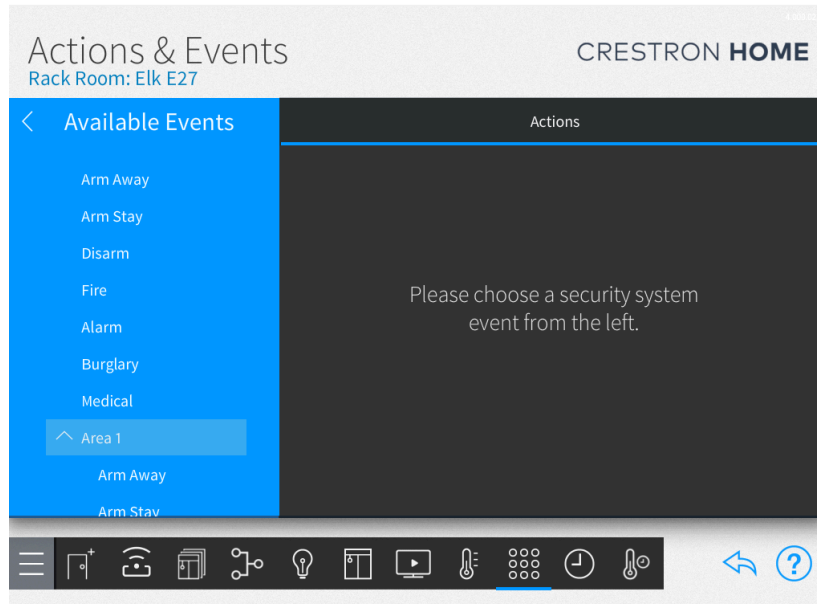






You can use the available security "Actions & Events"

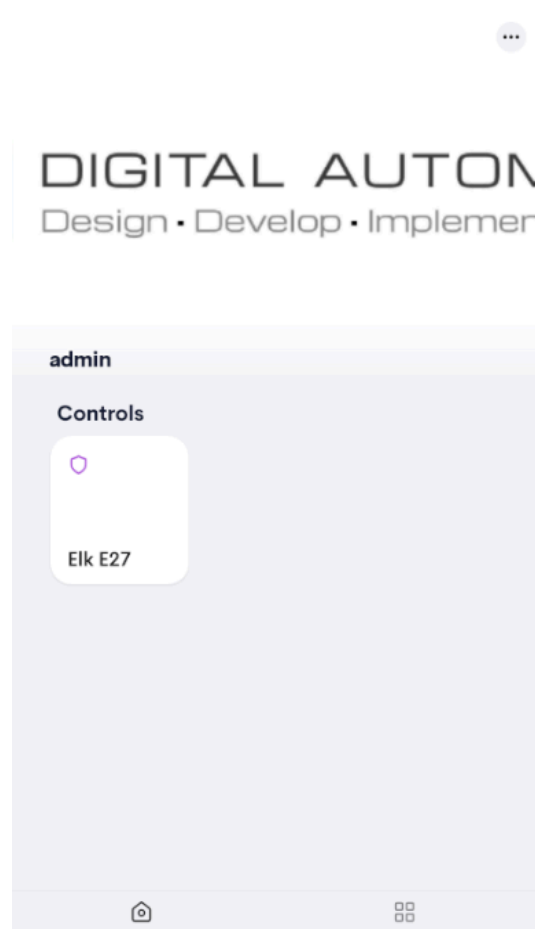




## End-User Experience

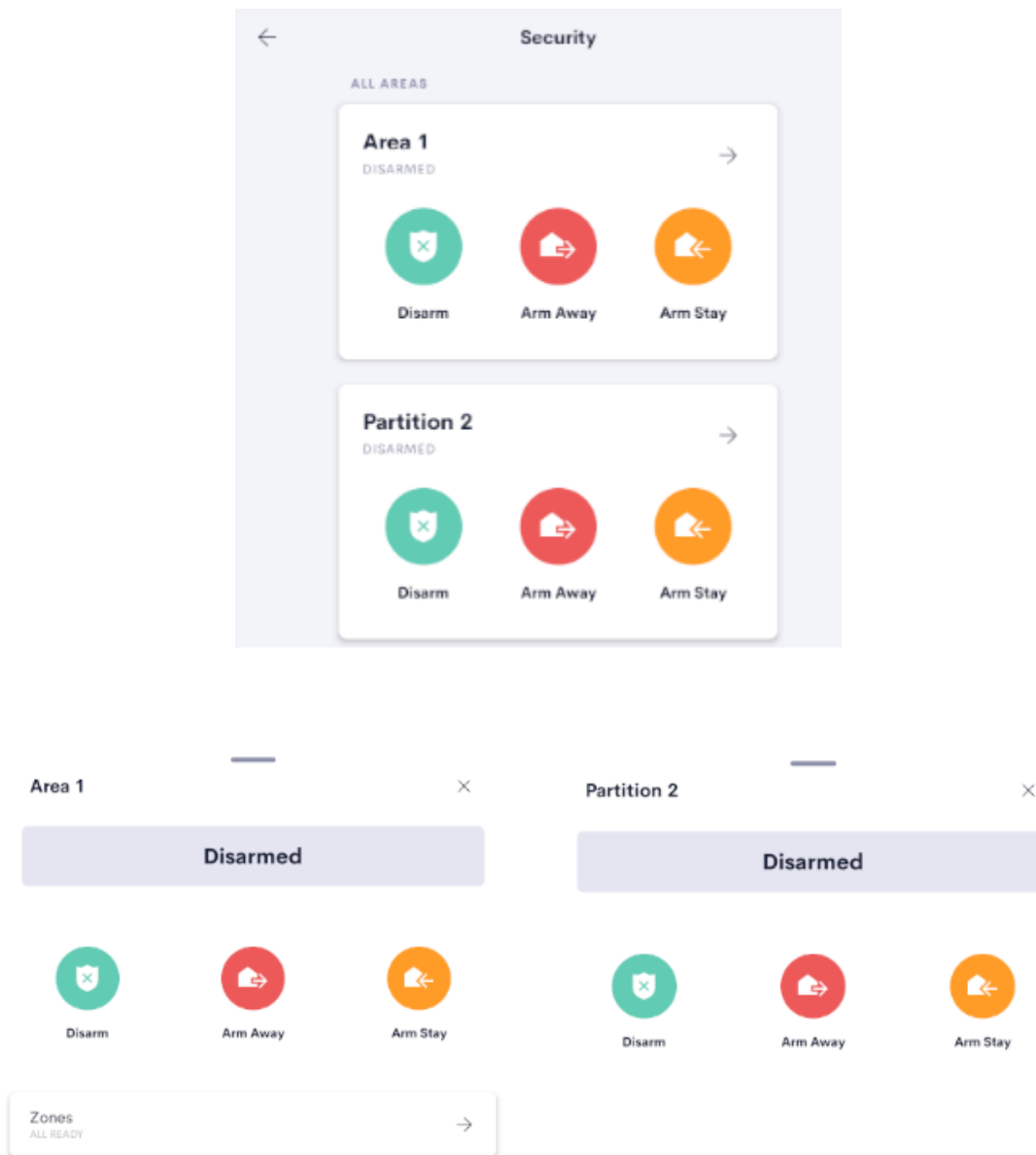
The Elk security system driver can arm and disarm the system, and bypass any zone independently. The current system status is displayed on the UI.

The tile is available on the Home screen.

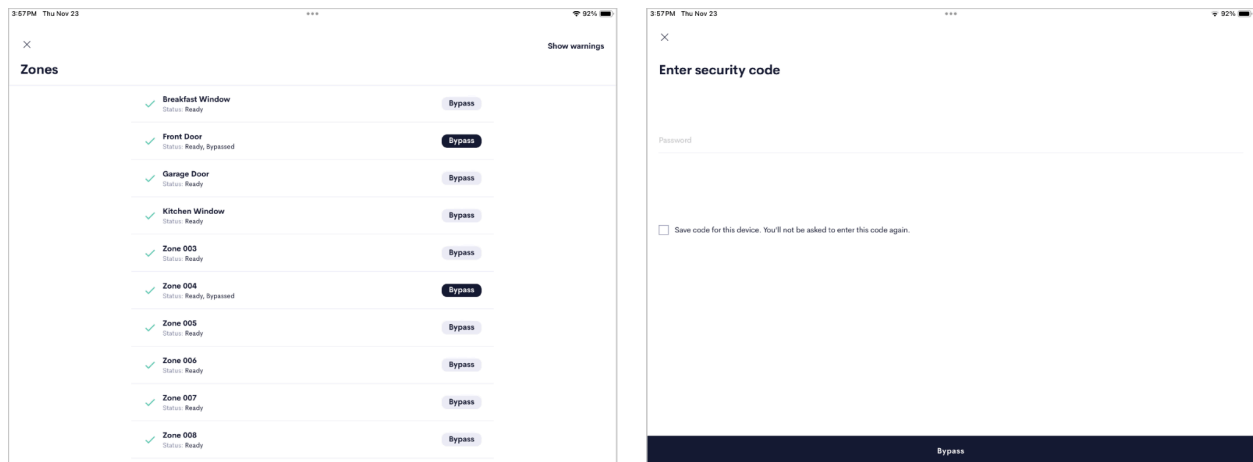




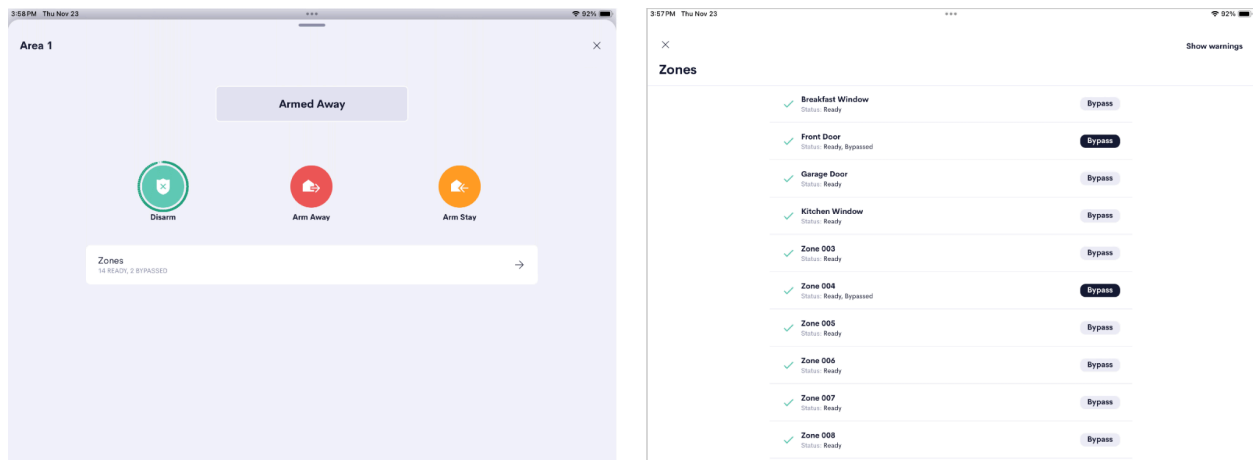
When you open the Security System tile, you will see the partition page



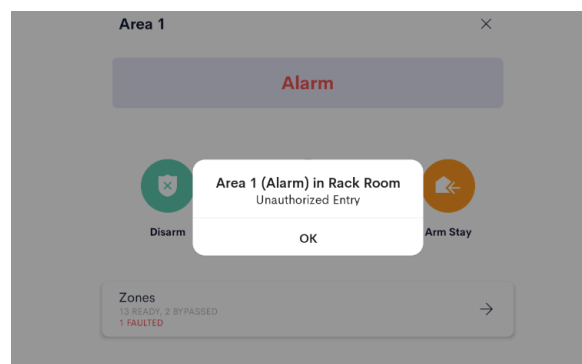
The zone button displays the list of zones with their names and current status. You can bypass or un-bypass any zone using the Bypass button, it will ask for the passcode.



To arm or disarm the system you must press and hold the button until the circle is filled. It will ask for the passcode.



When the system is alarmed a pop-up message will appear on the screen.



## Known Issues

- Sometimes the bypass button is not visible on Android. Just reboot the app.
  - Function buttons are unavailable (limitation of CH's security device type).
  - Sometimes when the system is armed or disarmed from the CH app a loading wheel is present permanently in iOS. You need to close and open the app again.
  - The quick action is triggered for all areas (limitation of CH's security device type).
  - The processor needs to be rebooted to enable the security Events on CH setup. (Limitation of CH's security device type).
- 

## Supported Features

- Arm Stay
  - Arm Away
  - Disarm
  - Zone list
  - Zone bypass
  - Multi Areas control (Partition)
- 

## Minimum System Requirements and Dependencies

- Crestron Home 4.003.0104.
  - CDD SDK 20.0000.0022
- 

## Test Environment

- Crestron Home 4.001.0334.
  - CP4R Firmware v2.8000.00056 (Apr 4, 2024).
  - CDD SDK 20.0000.0022
- 

## Supported Models

- E27

## Contact Information

If you have any questions please contact us at [drivers@digitalautomation.us](mailto:drivers@digitalautomation.us)

---

## Version History

### 0.0.1

09/29/2023

- Initial beta version.

### 0.0.2

01/18/2024

- Fixed issue with the zone status feedback

### 0.0.2.1

02/02/2024

- Fixed issue with passcode entry.

### 0.0.2.4

04/24/2024

- Fixed issue with zone status feedback.
- Fixed issue with alarming status feedback.
- Fixed issue with zone disappearance.

### 1.0.0

05/17/2024

- Release version.

## **1.0.1**

09/25/2024

- Fixed issue with zone events.

## **1.0.2**

10/21/2024

- Fixed issue with zone bypass.
- 

## **Licensing and Copyright Information**

All product names, logos, brands, trademarks, and registered trademarks are the property of their respective owners. All company, product, and service names used in this manual are for identification purposes only. Use of these names, trademarks, and brands does not imply endorsement.

Certain Crestron products contain open-source software. For specific information, please visit [www.crestron.com/opensource](http://www.crestron.com/opensource)