



DIGITAL AUTOMATION

Design • Develop • Implement

ELK SECURITY

Crestron Home™ Driver

www.digitalautomation.us



Thank you for downloading the
Crestron Home™ Driver.

If you have any questions don't hesitate
to contact us, we are happy to help.

Contact us

drivers@digitalautomation.us

Visit us

www.digitalautomation.us

Index

Elk CCD - Driver Summary	3
<hr/>	
How to Sideload the driver to Crestron Home™	4
<hr/>	
Setup Instructions	5
<hr/>	
Quick Action and Event Setup Instructions	13
<hr/>	
Events Setup Instructions	19
<hr/>	
Crestron Home™ App	22
<hr/>	
Release notes	25

Driver Summary

The Elk driver Manages communications to the ELK security panel via TCP/IP (Requires an ELK-MIXEP to be installed and properly configured). You will be able to control your Elk security system; arm stay, arm away, and disarm. You will also get arming status, the ability to bypass all the faulted zones, and the ability to trigger defined function keys when implementing the basic license. In addition to all the basic features, the Pro license adds support of individual Faulted Zone lists with the ability to Bypass individual Zones. Quick action sequences are also added for arming, disarming, and function buttons.

Triggers will raise events for any faulted zone and armed or disarmed transitions.

We recommend creating a room that will be hidden (On this help file, it is called out as **Rack**) to add the Elk into the Crestron Home™ user interface.

This driver comes with a 30-minute trial Pro license. You can purchase a full license at <https://digitalautomation.us/product/elk-security-crestron-home/>

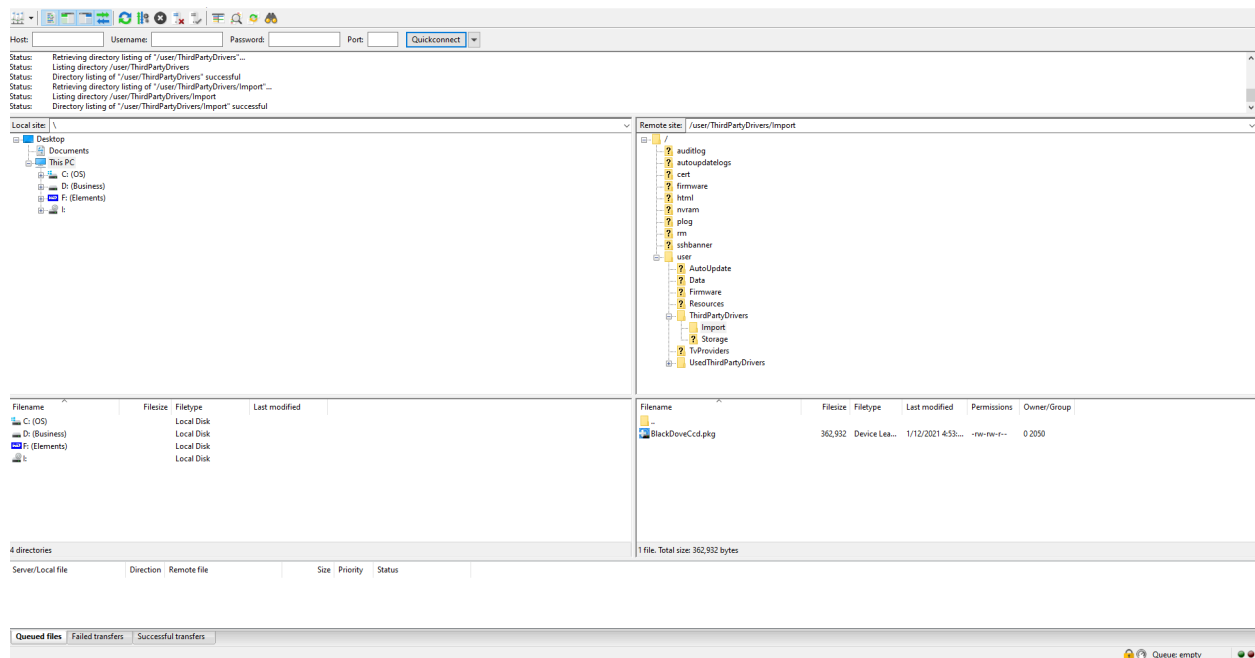
Note: As with any driver, It is strongly recommended that a configuration or a golden configuration be saved in Crestron Home™ before adding any driver.

How to Sideload the driver to Crestron Home™

First, check the Setup Instructions to see if this step is required as the Driver may already be pre-installed in the CH Setup app. If it is not listed, before beginning the Crestron Home™ (CH) configuration, the DA driver needs to be sideloaded to the CH processor. CH enforces security, so you will need to enter the username and password in order to browse the internal flash.

Once you've downloaded the *.pkg files to your computer, launch the file browser and connect to your processor. Using Toolbox or your preferred FTP file manager, transfer the pkg files to the processor.

On the processor navigate through the fort structure to the "Import" folder.



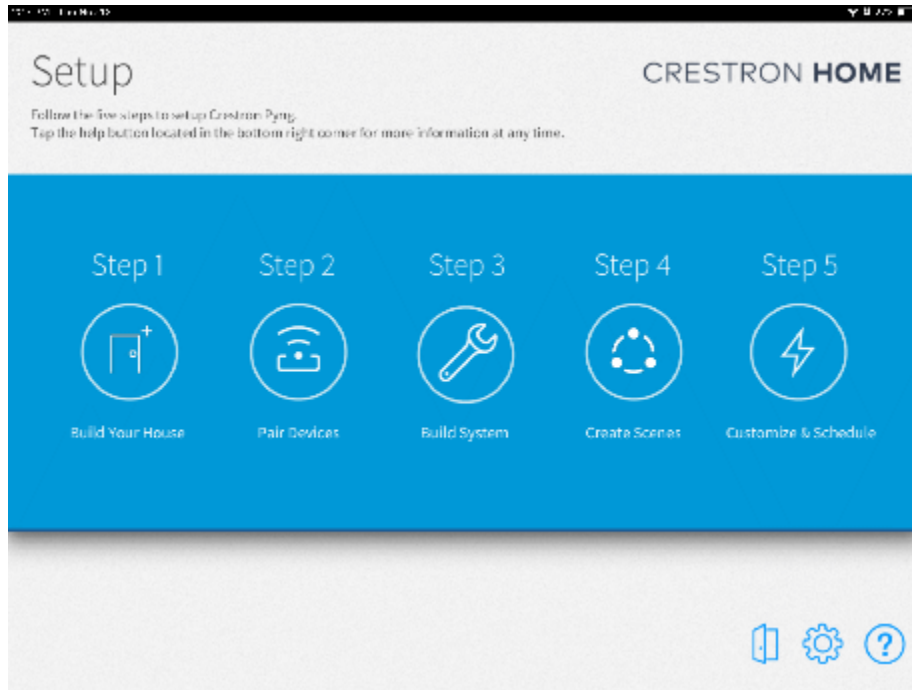
Internal Flash -> User -> ThirdPartyDrivers -> Import

Transfer the files from your computer to the Crestron™ processor, CH will automatically import the driver. Setting up the driver will then be available through the Crestron Home™ configuration app.

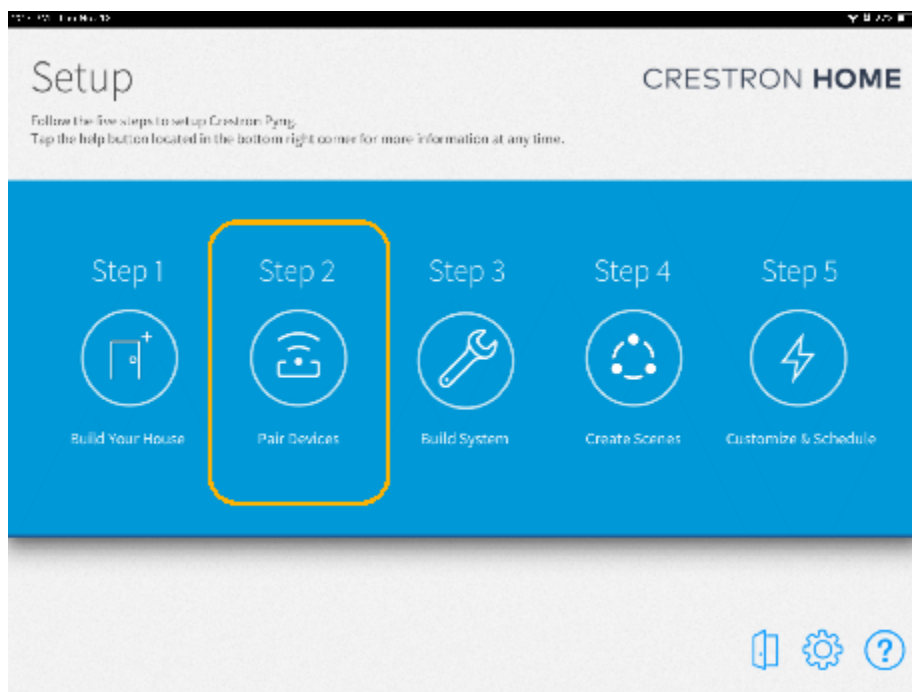
Note: For more details on installing or updating the driver follow the instructions on https://support.crestron.com/app/answers/detail/a_id/1000526

Setup Instructions

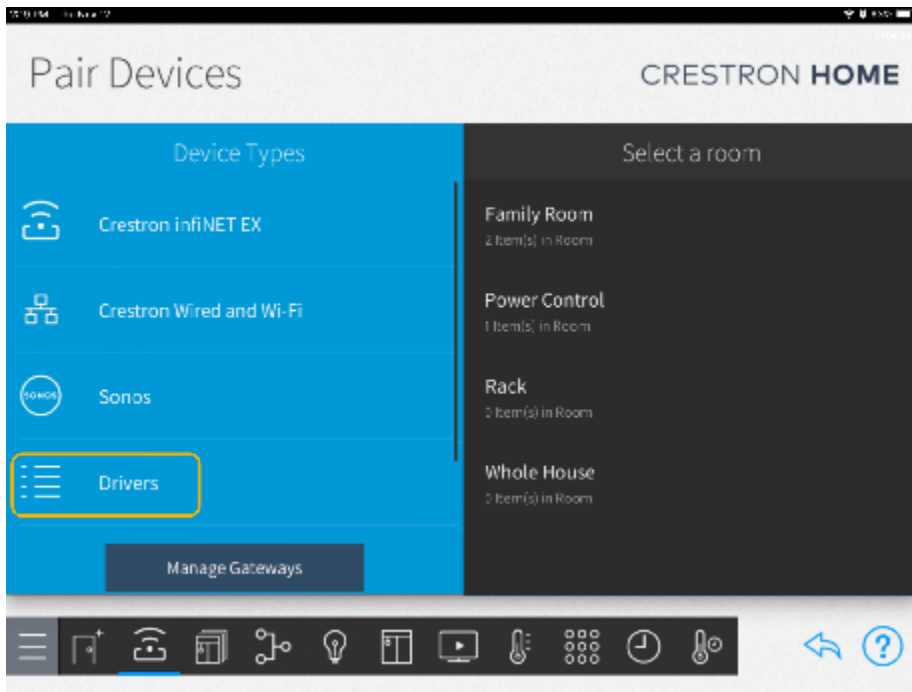
Launch the Crestron Home™ Setup app.



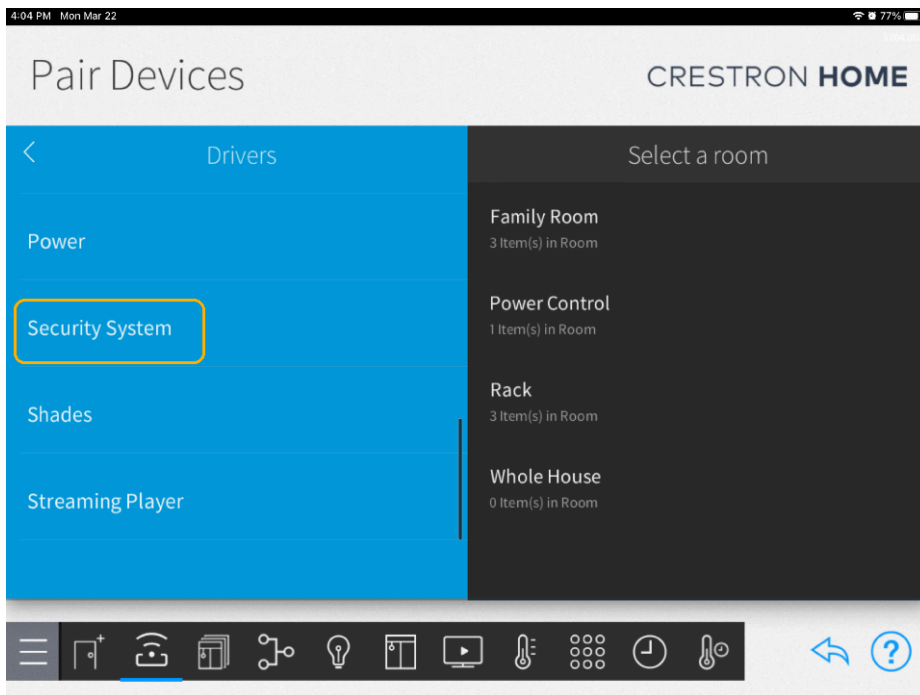
Select "Step 2 - Pair Devices".



Select "Drivers".



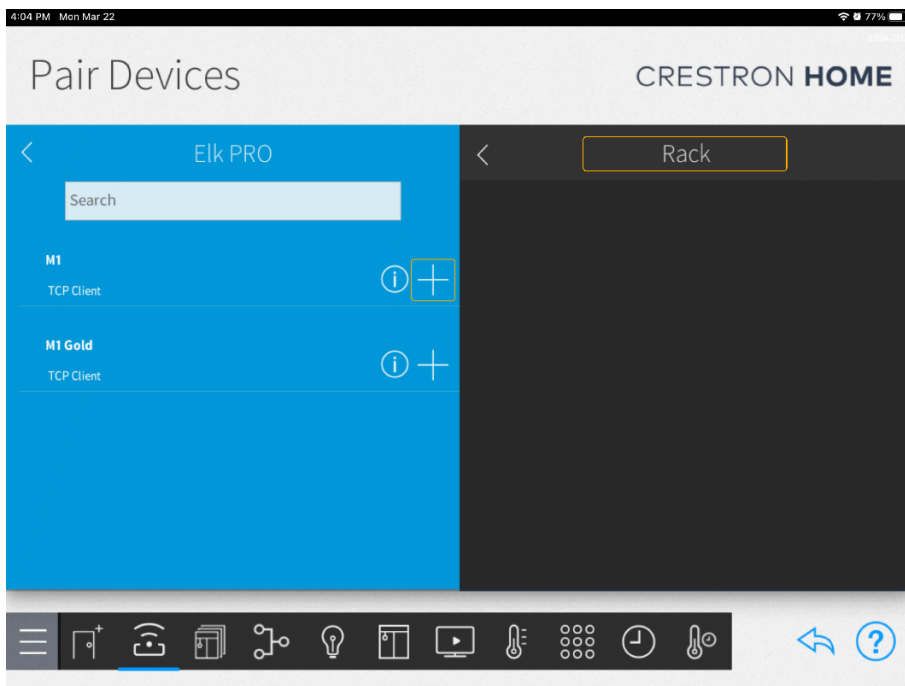
Select "Security System".



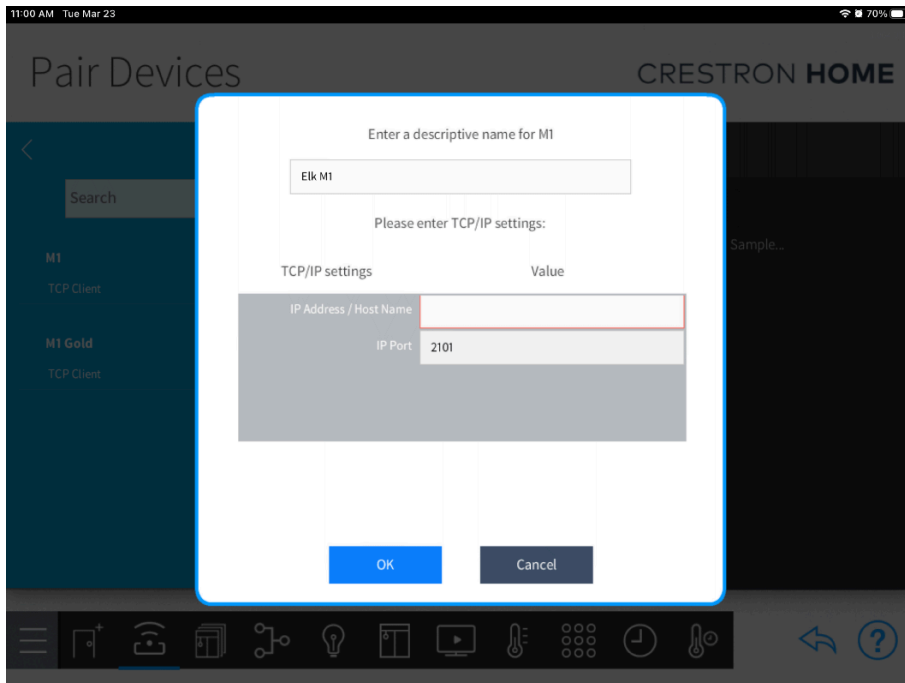
Select **“Elk”** under the Security System Driver selection and select the desired room under the Select a room selection. In this example, we will use **“Rack”**.



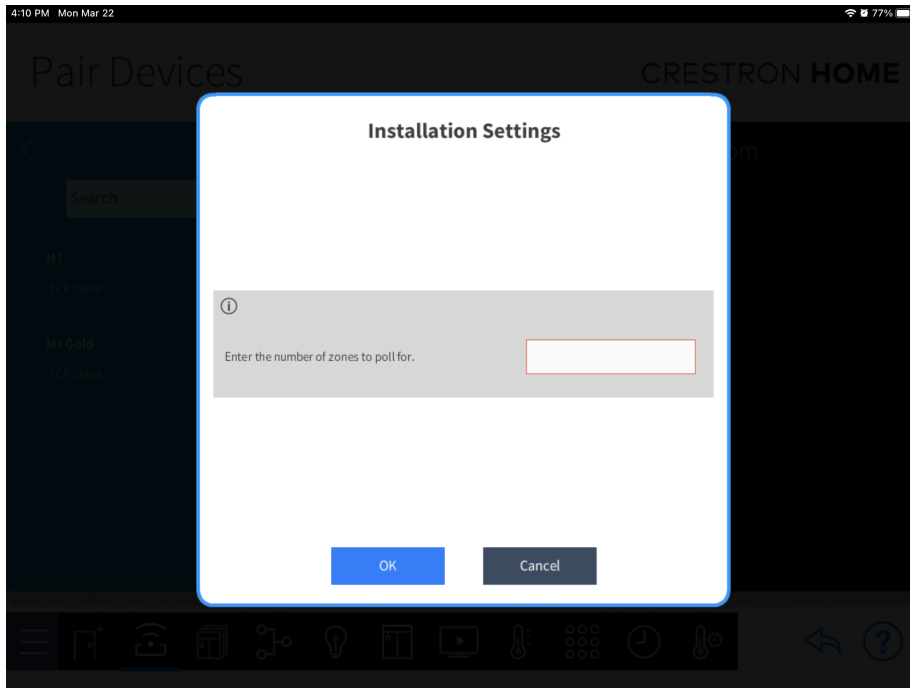
Add the Elk CCD Driver by clicking the **“+”** button.



You will be prompted to enter the IP address of the Elk security panel as well as the name you want to be displayed on the security tile. The name will appear on the user interface as entered. The IP port should be left as displayed unless it has been changed on the Elk.



Once you have added the Elk CCD driver to a room you will need to enter the number of zones to poll. This should match the number of zones defined in the ELK. The maximum is 208 supported by ELK. Larger numbers will cause the Crestron Home™ app to notify you the system is busy while it syncs the names as programmed in the ELK with CH. This only happens the first time after adding the driver or after making changes in the installer settings.



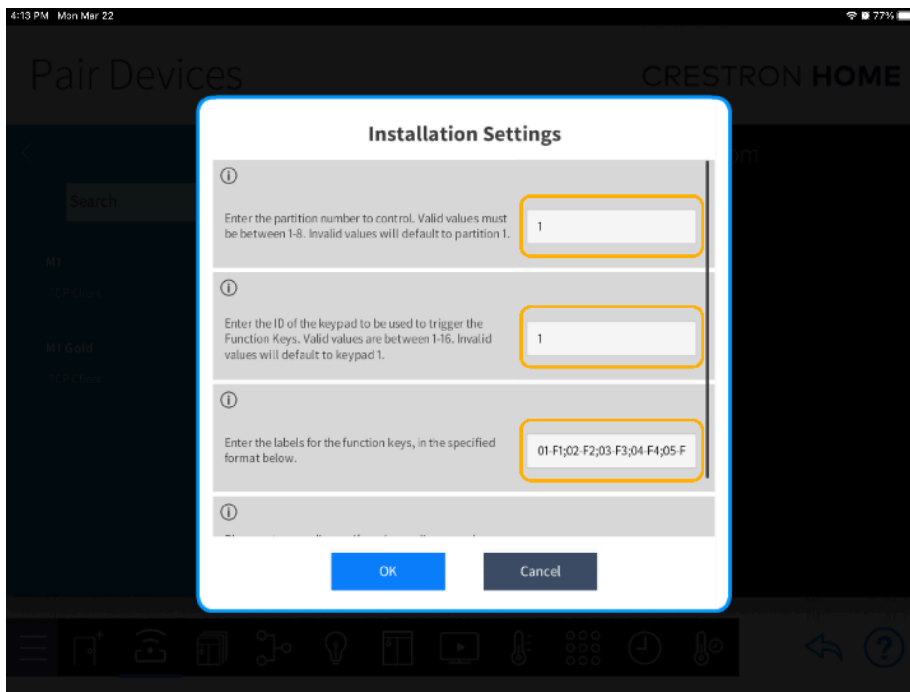
Next, you will be prompted to enter the partition number and keypad ID. A keypad ID is required since the function keys could vary according to how the security keypad is programmed.

Also, you'll be prompted to enter the labels for the function keys. The format for naming the function keys is as follows: the semicolon separates each entry. The dash separates the function key number and the name. The order that you specify here will be how it will show on the list.

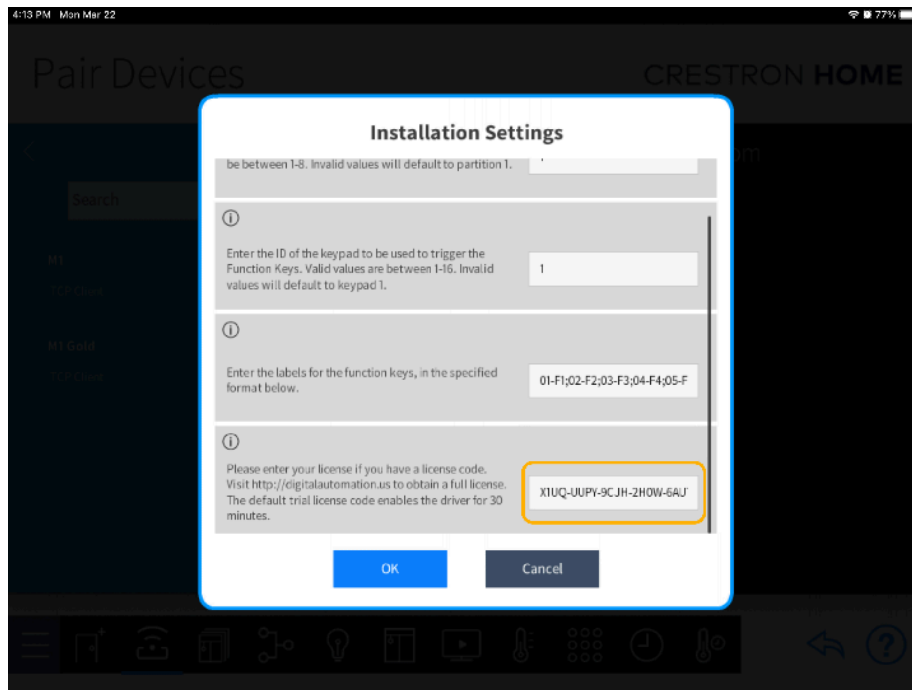
For example:

03-Medical;02-Police

This means the first entry has 03 as the function key number and Medical is the label. The next entry is function key 2 and the label will be Police.

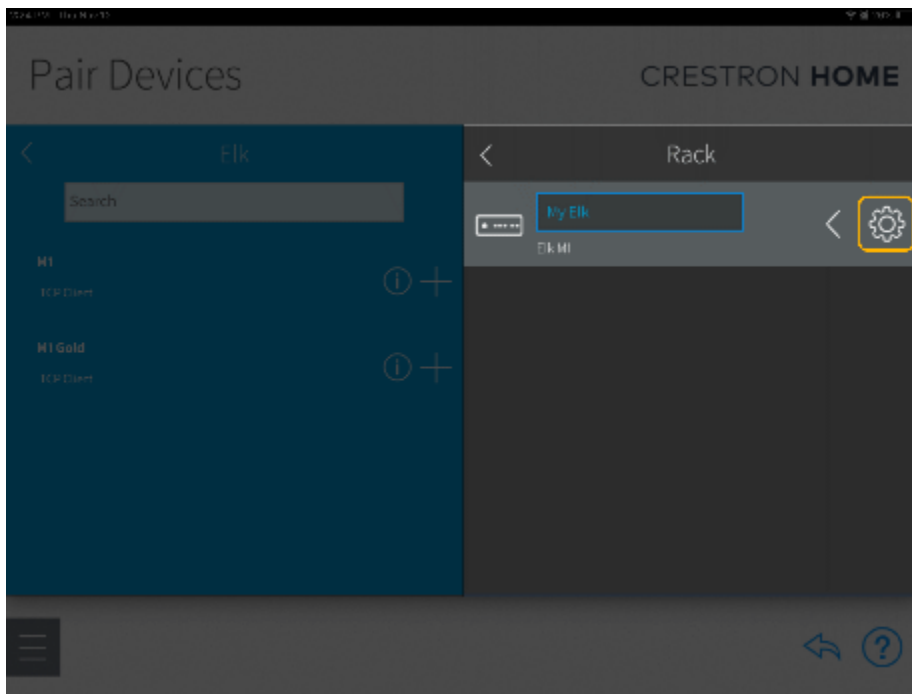


Once you have entered the function keys labels, you will need to enter the license code you were given. By default, you will find a 30-minutes trial Pro license code as part of the settings. Full license codes can be purchased on the Digital Automation website. - www.digitalautomation.us

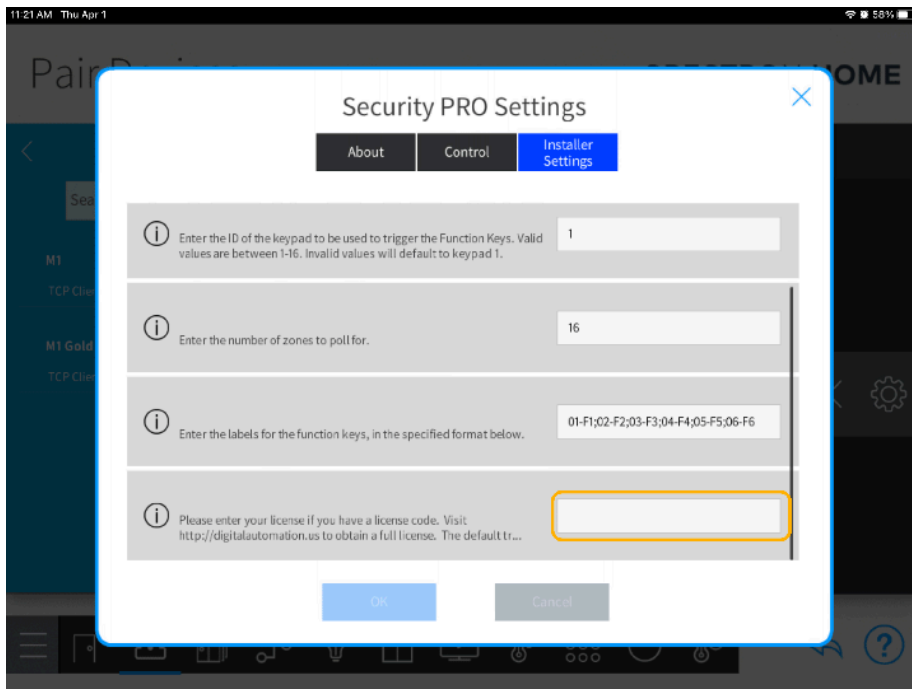


Note: If the license code is entered incorrectly the control panel will not display any status information. To resolve this issue you can re-enter your code by going to the settings options of the Elk driver in the Crestron™ Setup app.

Once in the settings options, go to the “Installer Settings” tab where you will be able to enter the correct license code.



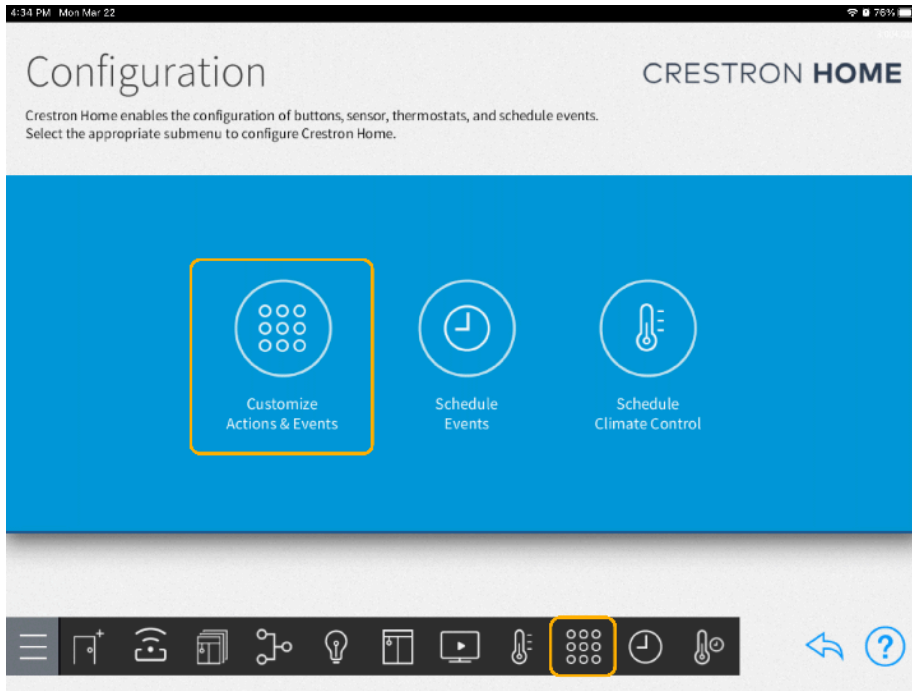
Note: If you modify any of the other installer settings shown here, make sure you also restart the home app.



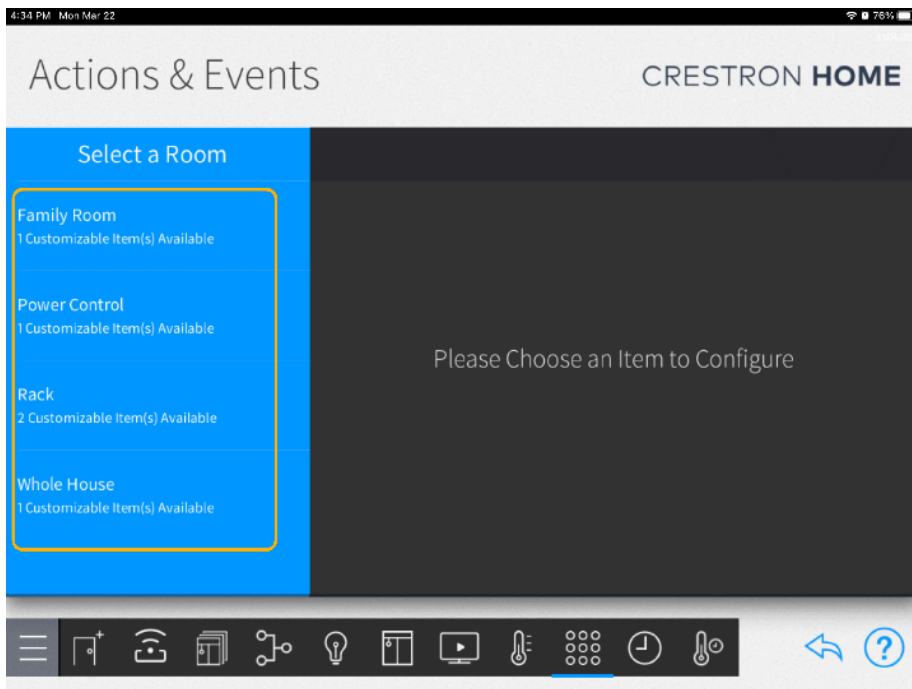
Quick Action and Event Setup Instructions*

*Only available with the Pro license

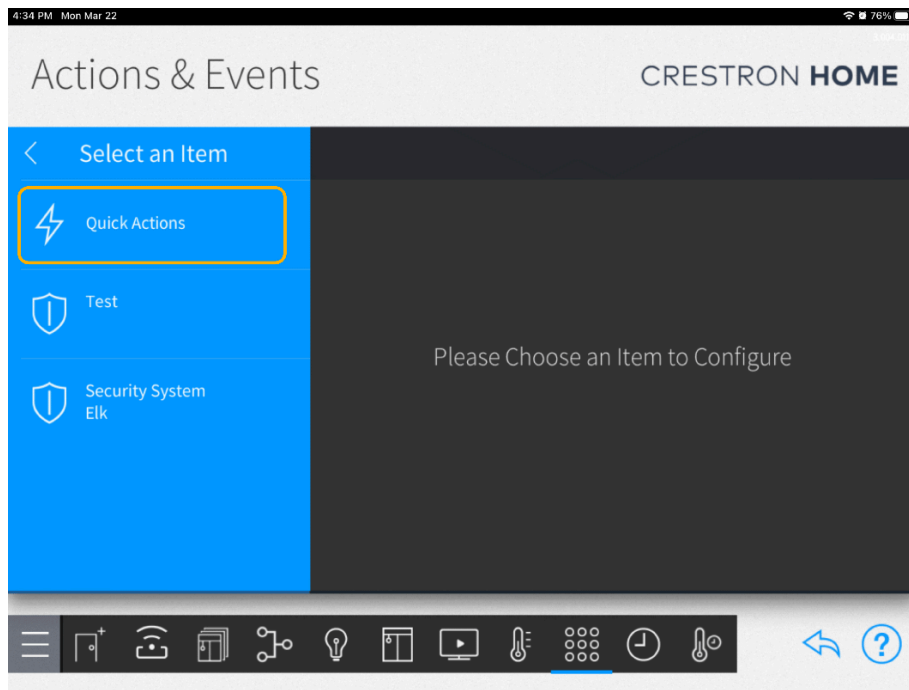
With the Elk pro license, you will be able to add quick actions. To configure them go to the “Customize Actions & Events” options.



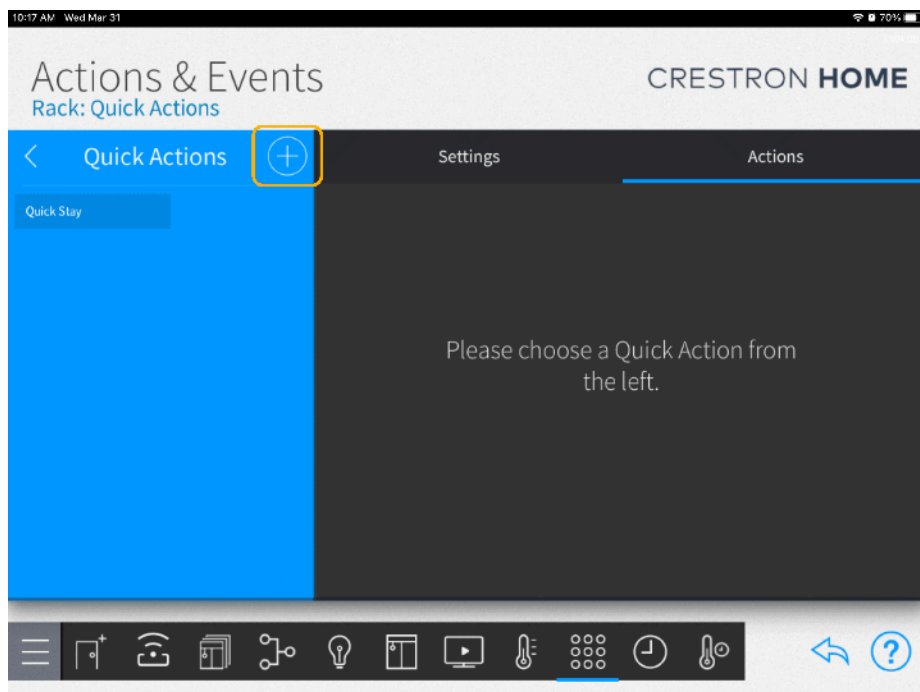
Select a room where you want to add the quick actions



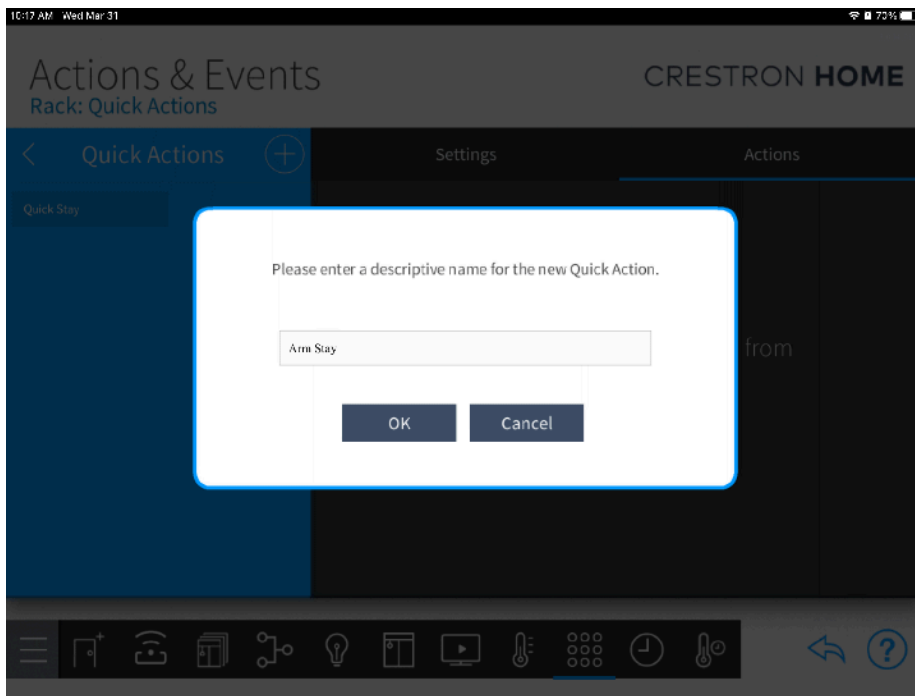
Select **“Quick Actions”**



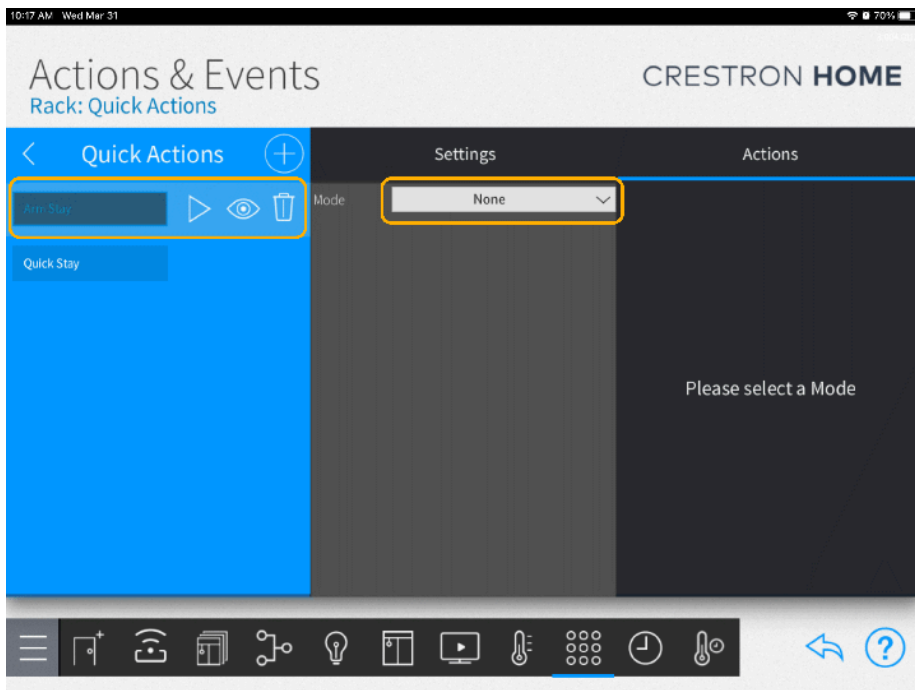
To add a new Quick Action, Select the +



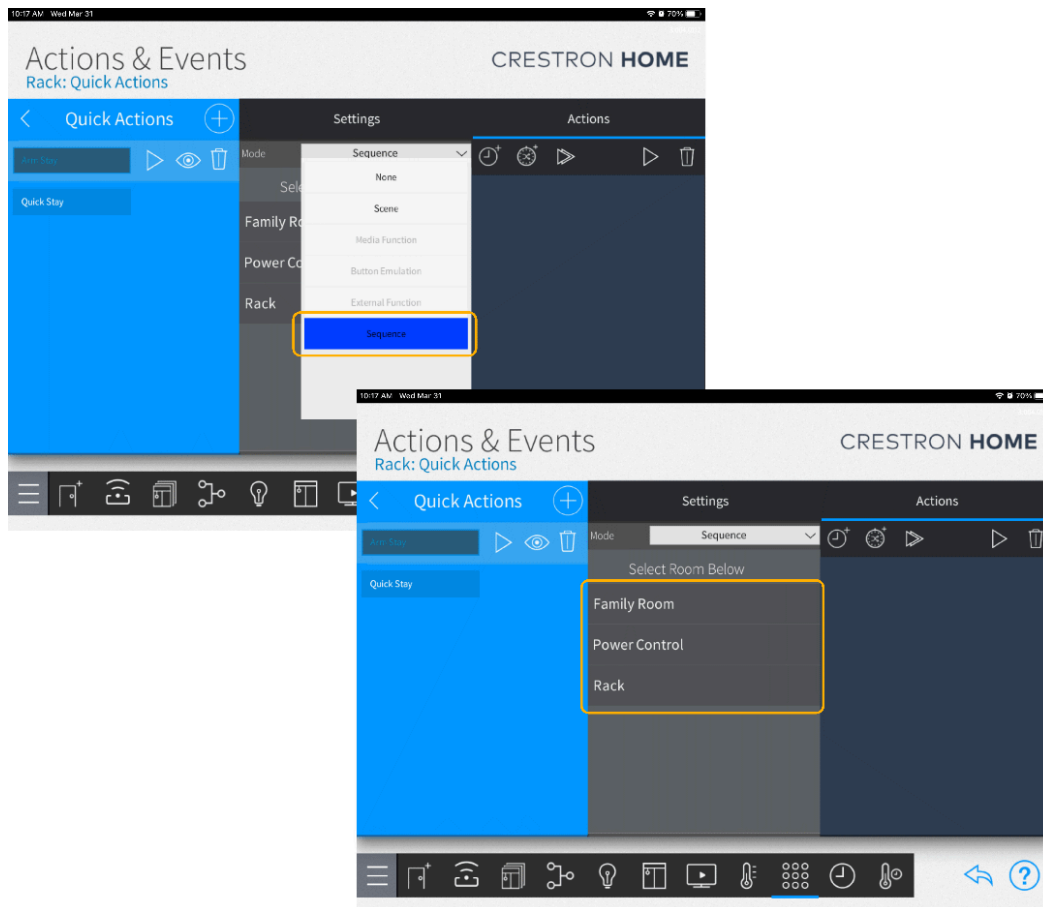
A popup will be presented to Name the Quick Action, then Select OK



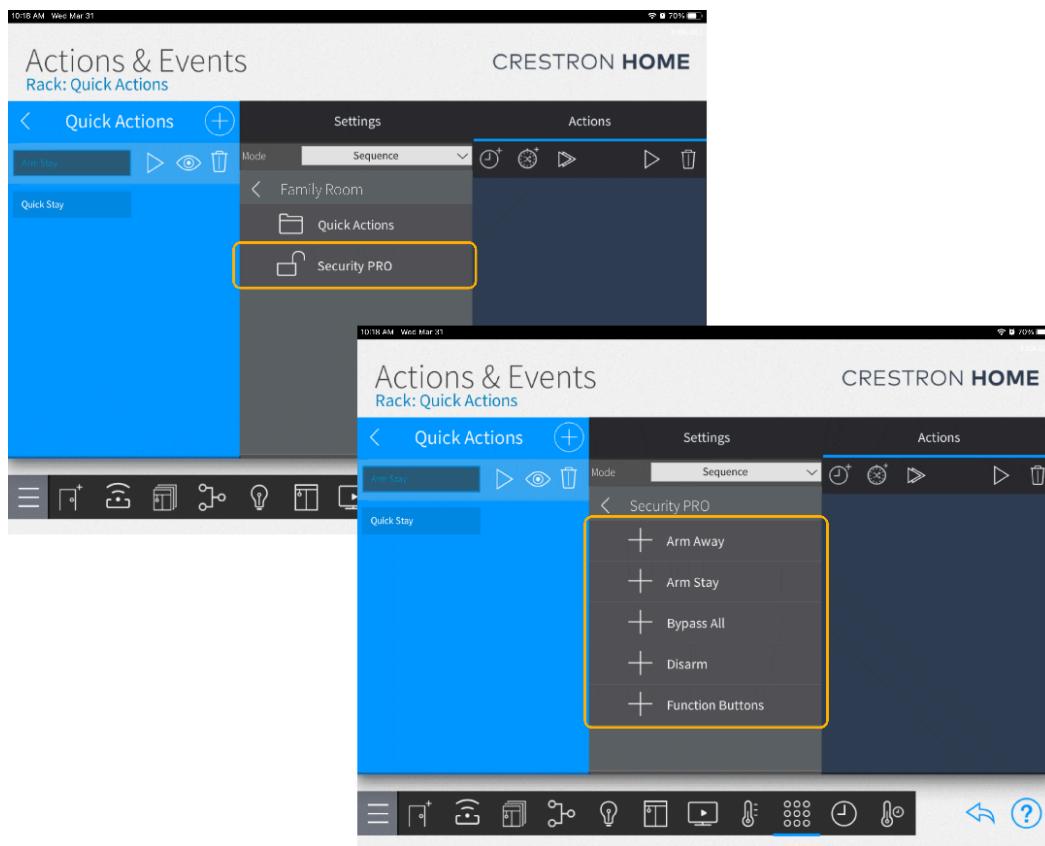
Once an option is selected, click on the Mode dropdown list and select **Sequence**.



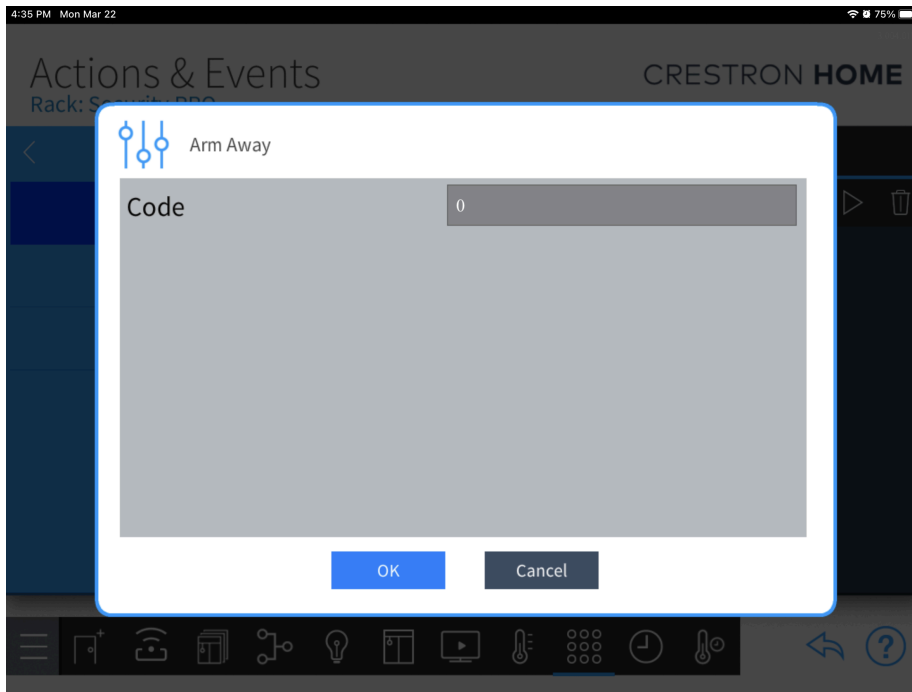
Select the room with the Elk Driver defined



Select the Elk Driver to be presented with the Arming states

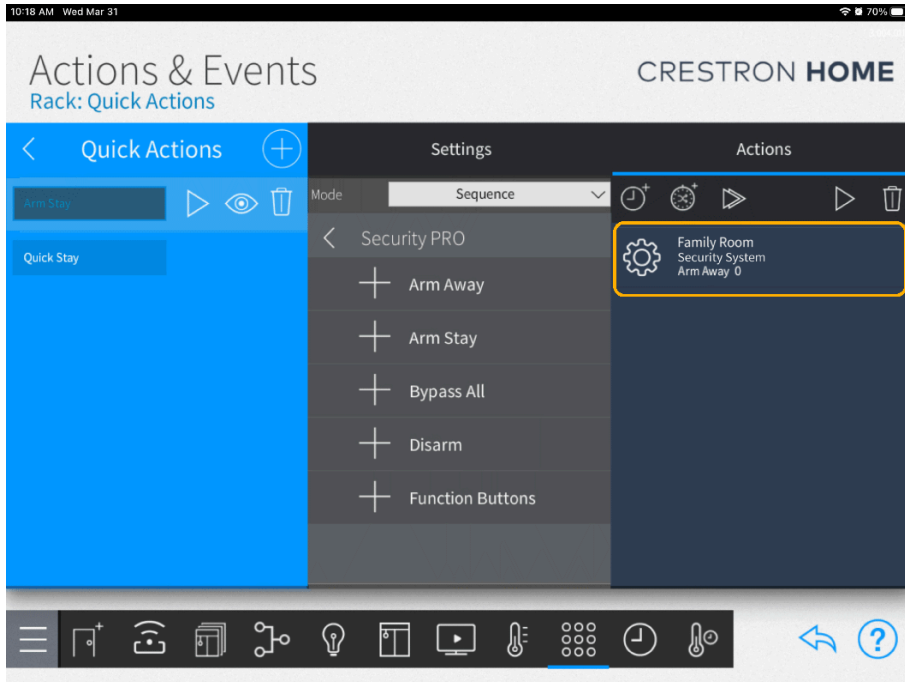


Upon selecting an Arming State, there is an option to enter an Alarm Code. You can leave the code as 0. If the system is disarmed, it will automatically arm without the code. A code is required for Disarm.



After setting a code hit “OK” and your actions setup will be finished. You can add the number of quick actions repeating this process.

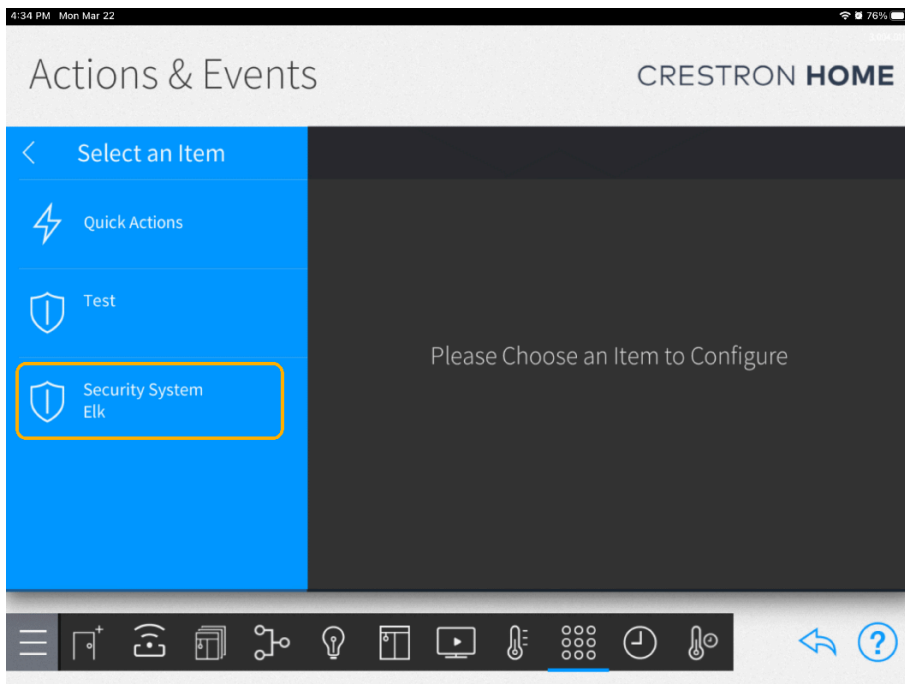
To set up the different arming options you will need to follow the steps previously mentioned.



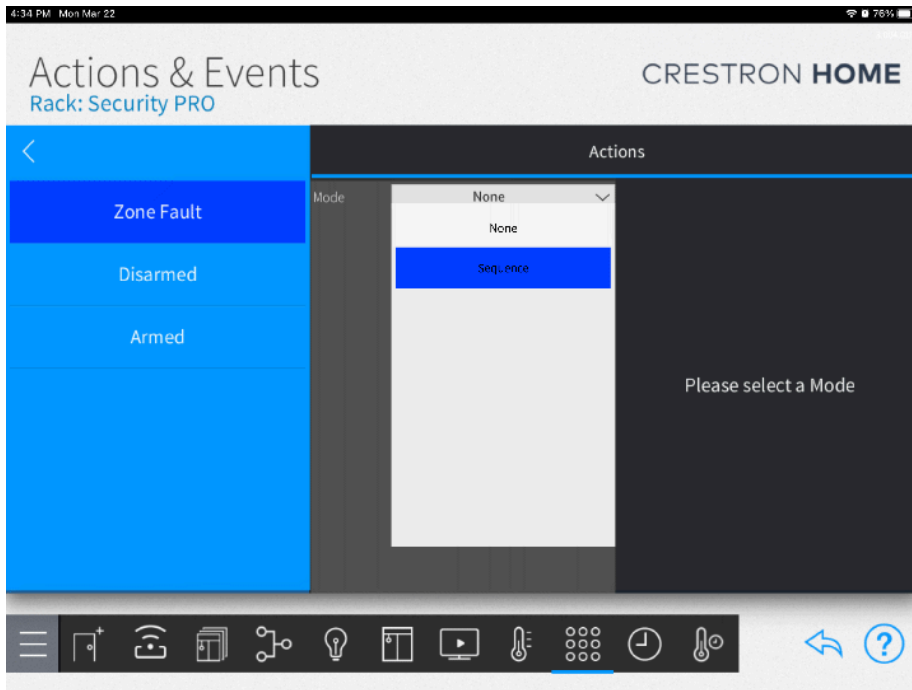
Events Setup Instructions*

*Only available with the Pro license

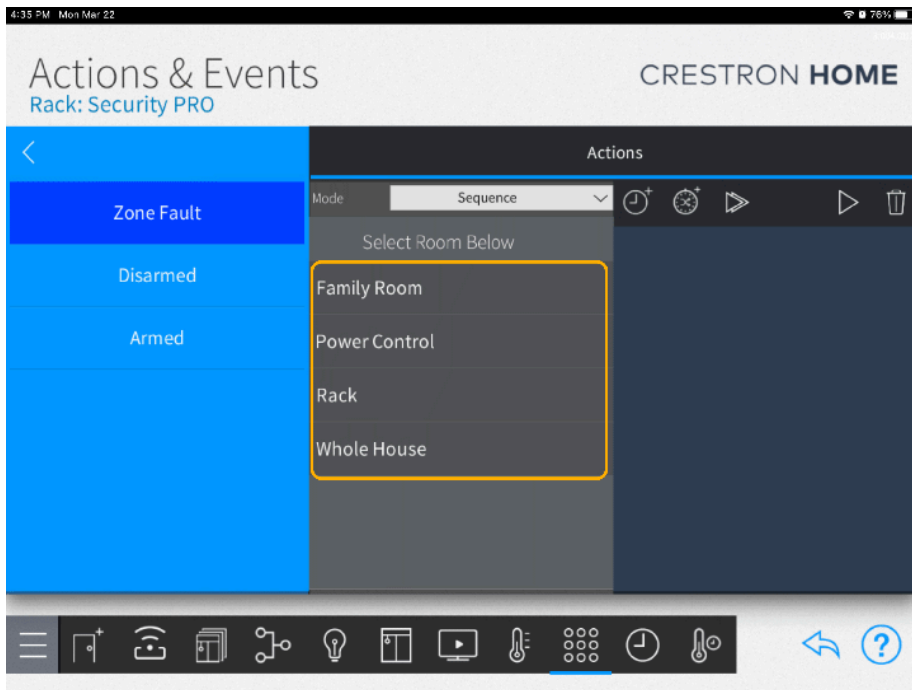
Select "Security System Elk"



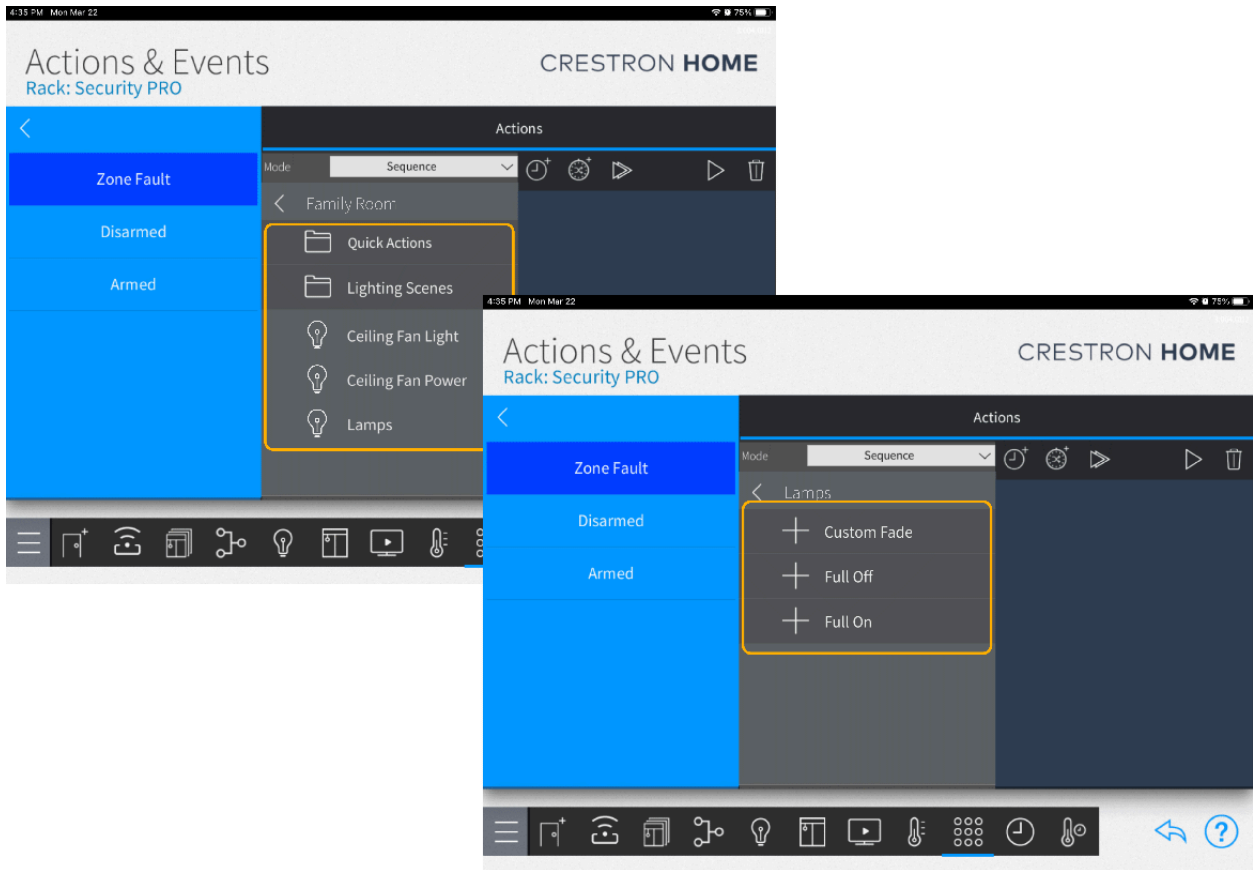
You will be presented with different arming options. Once an option is selected click on the Mode dropdown list and select "Sequence".



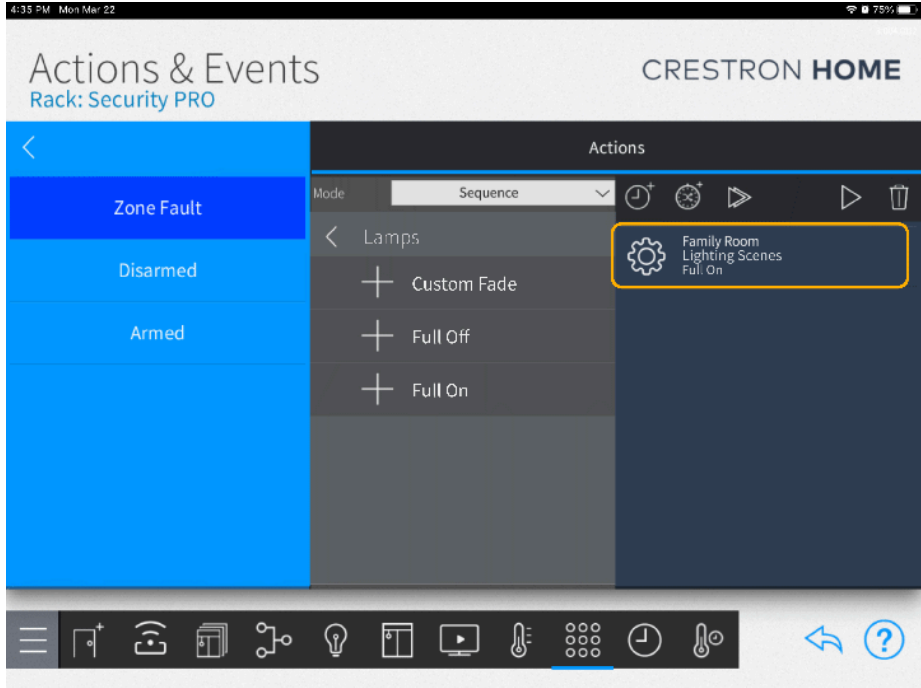
A list of rooms will be presented. Select a room.



Select the actions for the selected room.

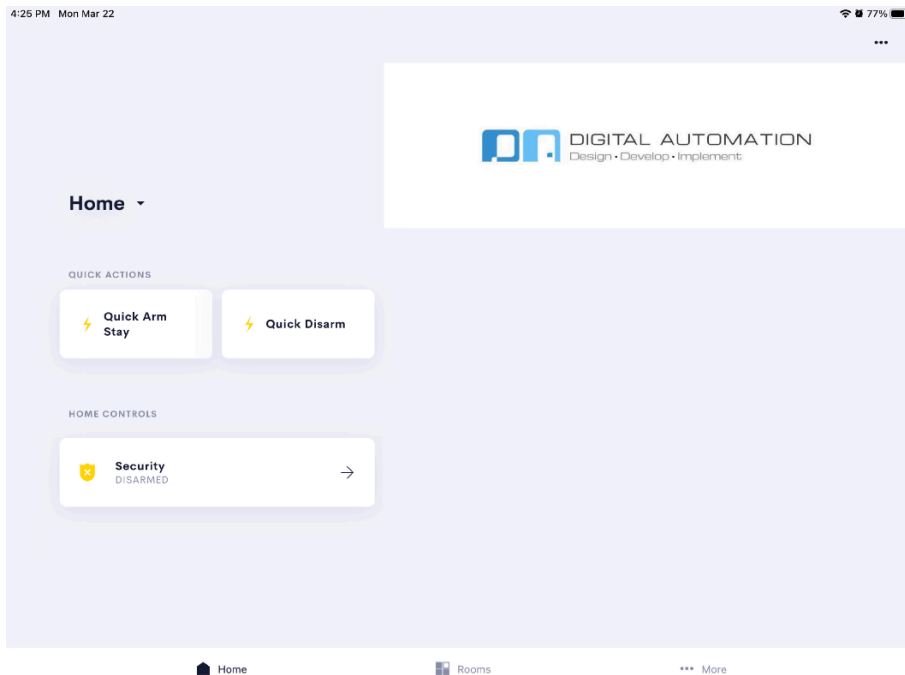


The room and the actions selected will now populate the list to the right. To add additional steps to the event trigger tap on the new item on the list.

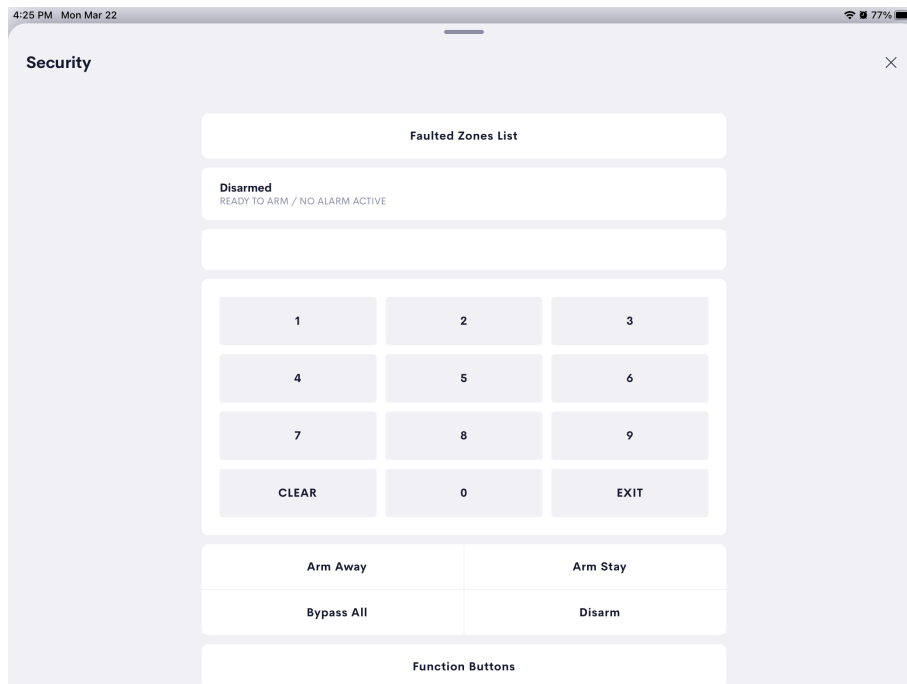


Crestron Home™ APP

Once you have finished the setup, the system will attempt to connect to the Elk security panel. Once the busy dialog goes away and you are back at the screen to select a driver, you are done. You may then start the Crestron Home™ app, the new tile for the security driver and the quick actions tiles will be available on the home screen under the Home Control section.



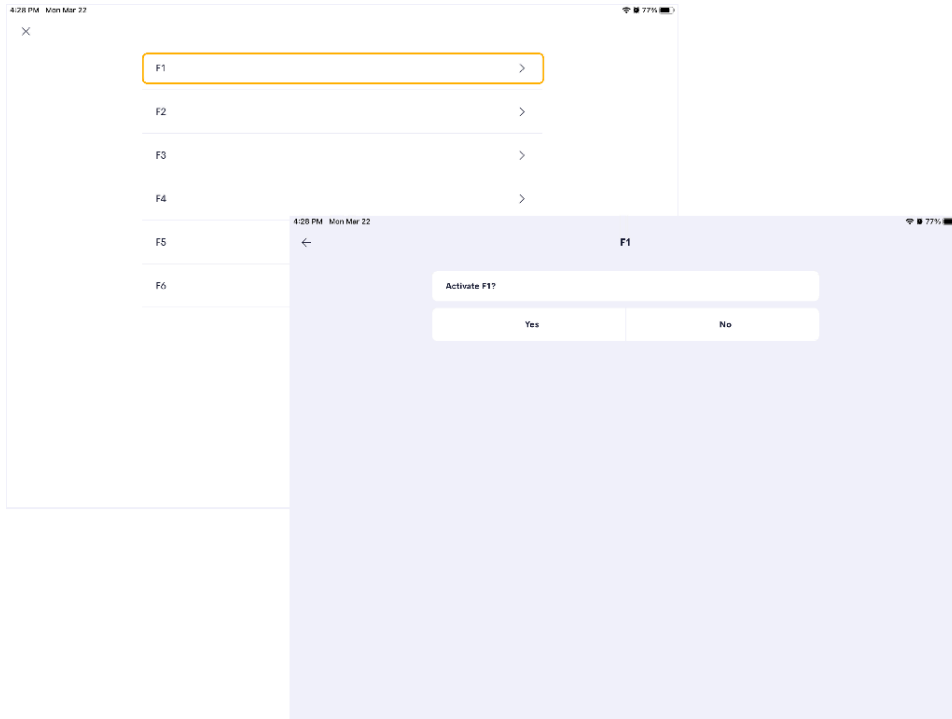
Once you tap on the new **Elk Security** tile, the user interface will switch to the security control panel.



In the security control panel, at the top, you can access the **"Faulted Zones List"**. Individual Zones can be Bypassed or UnBypassed. This button will not show if there are no faulted zones.

Note: This feature is only available with the Pro license.

Also in the security panel, you will be able to activate the functions buttons by tapping the **"Function Buttons"** button.



Release Notes

1.00 - Initial Release

This release will allow a user to control the Elk security panel over IP. Users are able to do basic keypad functions such as arm away, arm stay, disarm and bypass all. This driver will also show basic arming status information. Users will be able to trigger the function keys that are programmed on the keyboard.

2.00 - Pro Release

Supports Pro features, including Faulted Zones List, sequences, and events. The user now can view a list of faulted zones and be able to bypass or un-bypass individual zones. Users can also monitor when the security is armed or disarmed so that specific actions can be triggered. The User can also define quick actions to be able to trigger specific commands on the security through sequences. There is also an Exit button so that you can arm to vacation by pressing the exit button a second time during the exit timer.

3.00 - Unified Release

Combines the Basic and Pro drivers into a single unified driver.

3.4.0 - Added Features

Updates the sdk to v8.000.0012. Adds events to track individual faulted zones. Exposes the arm functions as quick actions.

3.5.0 - Bug Fix Release

Updated the way the faulted zone list populates to eliminate “your home is busy” messages in cases where the list always has a number of faulted zones and is constantly being updated due something like a motion sensor. This also changes the order of the zones on the faulted list so that the newest faulted zones are at the bottom.

3.6.0 - Feature Release

Added events that will be triggered when the armed status changes.

3.7.0 - Enhancement Release

Updated the polling routine for zone names so that it’s a little more robust.

3.8.0 - Feature Release

Added an option during driver install to allow the user to choose between Arm Stay or Arm Stay Instant. The new default is Arm Stay. Sequence options have also been updated to allow separate Arm Stay and Arm Stay Instant.

3.9.0 - Feature Release

Added the ability, during driver install, to specify a list of zones that will always show up, allowing the user to bypass. The list of zones will show up in a different section of the UI. This feature is only available in the PRO version.

3.10.0 - Bug Fix Release

Fixed a bug that would cause a message to popup when selecting a zone on the Faulted Zone List when no zones are defined in the secondary list of zones that are always available for bypass. This bug only shows up in the PRO version.

3.11.0 - Feature Release

Added the ability, during driver install, to enable an option to require a passcode for arming the system. Default is unchecked, which will follow the existing behavior.

3.11.1 - Bug Fix Release

Fixed a bug related to quick actions entering the passcode to disarm the system.

Note: Driver was tested on CP4-R with firmware version 2.8000.00028 running HomeOS version 3.021.0214.

Drivers are built using SDK version 8.000.0012, Home app version 1.9.2 on TSW, and version 1.12.11 of Home app on iOS. The driver is not guaranteed to work on any beta software release from Crestron™.



All product names, logos, brands, trademarks, and registered trademarks are the property of their respective owners. All company, product, and service names used in this manual are for identification purposes only. The Use of these names, trademarks, and brands does not imply endorsement.